

IP camera tester

User Manual

(V01.00)



- Thank you for purchasing the IP camera tester. Please read the manual before using the IP camera tester and use properly.
- For using the IP camera tester safely, please first read the 「Safety Information」 carefully in the manual.
- The manual should be kept well in case of reference.
- Keep the S/N label for after-sale service within warranty period. Product without S/N label will be charged for repair service.
- If there is any question or problem while using the IP camera tester, or damages occurred on the product, please contact our technical Department.

Content

1 .Safety information	1
2. IP Camera Tester Introduction	2
2.1 General	2
2.2 Packing list	3
2.3 Function interface	4
3. Operation	7
3.1 Installing the Battery	7
3.2 Instrument connection	8
3.2.1 IP camera connection	8
3.2.2 Analog camera connection	9
3.2.3 HD Coaxial camera connection	9
3.2.4 HDMI IN	10
3.3 OSD menu	11
3.3.1 Lite mode & Normal mode	11
3.3.2 Drop-down Menu	14
3.3.3 Short cut-menu	15
3.3.4 Screen capture	16
3.3.5 TesterPlay	16
3.3.6 Built-in Keyboard	18
3.3.7 IP discovery	20
3.3.8 Rapid ONVIF test	21
3.3.9 IP camera test	35
3.3.10 HDMI IN	38
3.3.11 Video monitor test	43
3.3.12 Color-bar generator (TV OUT)	51
3.3.13 SDI/EX-SDI Camera Test (*Optional)	53

3.3.14 CVI camera test (*Optional).....	54
3.3.15 TVI camera test (*Optional).....	60
3.3.16 AHD camera test (*Optional).....	62
3.3.17 Network tool	63
(1) IP address scan	63
(2) PING Test	64
(3) Network test (Ethernet bandwidth test)	64
(4) Port Flashing	68
(5) DHCP server	69
(6) Trace route	70
(7) Link monitor	70
3.3.18 Rapid IP Discovery	71
3.3.19 PoE power / DC12V 3A and DC 5V 2A USB power output	72
3.3.20 Cable Test	73
3.3.21 RJ45 cable TDR test.....	74
3.3.22 Cable Tracer.....	77
3.3.23 TDR cable test (*Optional).....	78
3.3.24 PoE Voltage test.....	82
3.3.25 12V power input test	83
3.3.26 Digital Multi-meter (*Optional).....	83
3.3.27 Optical power meter (*Optional).....	91
3.3.28 Visual Fault Locator (*Optional).....	93
3.3.29 Audio Record	95
3.3.30 Data monitor	95
3.3.31 Audio player.....	96
3.3.32 Media Player	96
3.3.33 RTSP Player.....	97
3.3.34 Hik test tool.....	98
3.3.35 Dahua test tool	101

3.3.36 Update.....	105
3.3.37 Office.....	106
3.3.38 LED Flashlight.....	106
3.3.39 Browser.....	107
3.3.40 Notepad.....	107
3.3.41 System Setting.....	108
3.3.42 File explorer.....	112
3.3.43 Theme.....	114
3.4 Audio test.....	116
3.5 HDMI output.....	116
3.6 PoE power output.....	116
3.7 DC12V 3A power output.....	117
4. Specifications.....	119
4.1 General Specifications.....	119
4.2 Multi-meter specifications.....	122
4.3 Optical power meter specifications.....	125
4.4 Visual fault locator specifications.....	125

1 .Safety information

- ◆ The tester is intended to use in compliance with the local rules of the electrical usage and avoid to apply at the places which are inapplicable for the use of electrics such as hospital, gas station etc.
- ◆ To prevent the functional decline or failure, the product should not be sprinkled or damped.
- ◆ The exposed part of the tester should not be touched by the dust and liquid.
- ◆ During transportation and use, it is highly recommended to avoid the violent collision and vibration of the tester, lest damaging components and causing failure.
- ◆ Don't leave the tester alone while charging and recharging. If the battery is found severely hot, the tester should be powered off from the electric source at once. The tester should not be charged over 8 hours.
- ◆ Don't use the tester where the humidity is high. Once the tester is damp, power off immediately and move away other connected cables.
- ◆ The tester should not be used in the environment with the flammable gas.
- ◆ Do not disassemble the instrument since no component inside can be repaired by the user. If the disassembly is necessary indeed, please contact with the technician of our company.
- ◆ The instrument should not be used under the environment with strong electromagnetic interference.
- ◆ Don't touch the tester with wet hands or waterish things.
- ◆ Don't use the detergent to clean and the dry cloth is suggested to use. If the dirt is not easy to remove, the soft cloth with water or neutral detergent can be used. But the cloth should be tweaked sufficiently.

About Digital Multi-meter

- ◆ Before using, you must select the right input jack, function and range.
- ◆ Never exceed the protection limit values indicated in specifications for each range of measurement.
- ◆ When the tester is linked to a measurement circuit, do not touch unused terminals.
- ◆ Do not measure voltage if the voltage on the terminals exceeds 660V above earth ground.
- ◆ At the manual range, when the value scale to be measured is unknown beforehand, set the range selector at the highest position.
- ◆ Always be careful when working with voltages above 60V DC or 40V AC, keep fingers behind the probe barriers while measuring.

- ◆ Never connect the meter with any voltage source while the function switch is in the current, resistance, capacitance, diode, continuity, otherwise it will damage the meter.
- ◆ Never perform capacitance measurements unless the capacitor to be measured has been discharged fully.
- ◆ Never measure any of resistance, capacitance, diode or continuity measurements on live circuits.

Visual laser sources

When you turn on visual laser sources, please don't stare at it, or will damage to eyes

When not using it, please turn it off and cover the protective cap .

2. IP Camera Tester Introduction

2.1 General

The 8 inch touch screen IP camera monitor is designed for maintenance and installation of IP cameras, analog cameras, TVI, CVI, AHD, SDI/EX-SDI cameras, as well as testing 4K H.264 /4K H.265 camera by mainstream, The 2048x1536 resolution enables it to display network HD cameras and analog cameras in high resolution. The unit supports many ONVIF PTZ and analog PTZ control. The combination of touch screen and key buttons make the IP camera tester very user- friendly.





The tester is also a great tool for Ethernet network testing. It can test PoE power voltage, PING, and IP address searching. You can use the blue cable tracer to locate individual connected cables from a bundle of cables. Test LAN cable for proper connection termination. Other functions include providing 24W PoE power to your camera, HDMI IN and out, CVBS loop test, testing IP and analog at the same time, LED Flashlight, DC12V 3A power output and much more. Its portability, user-friendly design and many other functions make the IP tester an essential tool for all installers or technicians.

2.2 Packing list

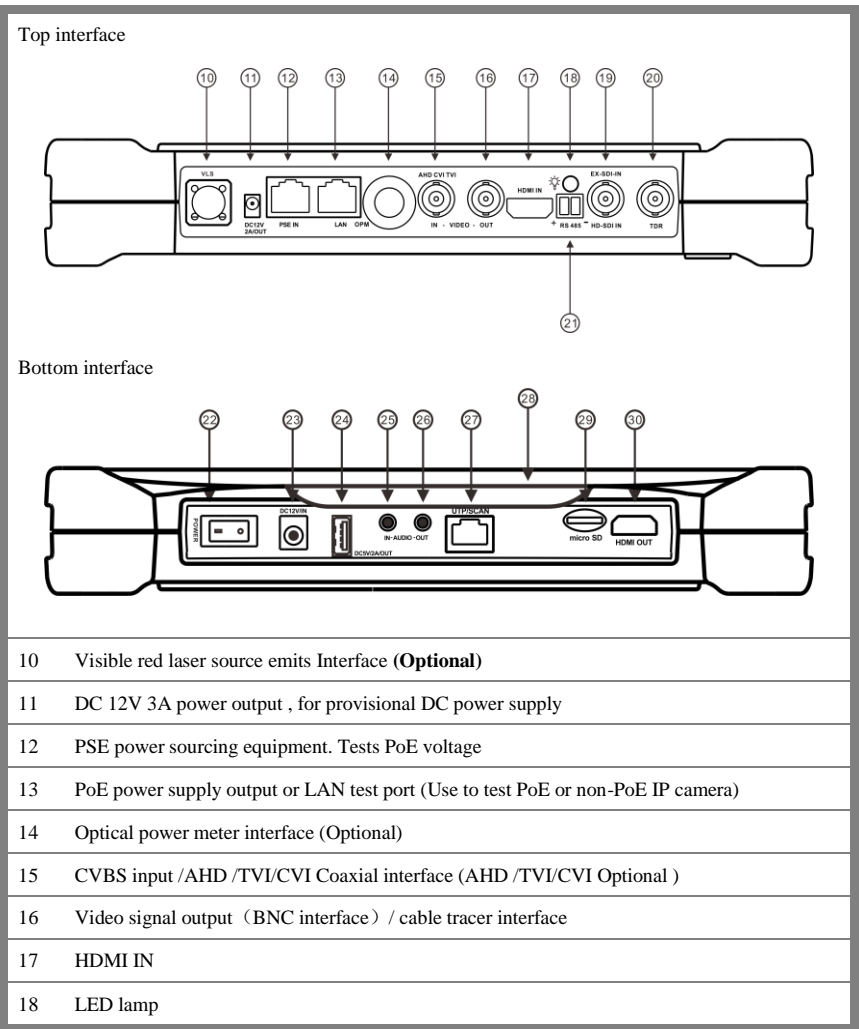
- 1). Tester
- 2). Adaptor DC12V 2A
- 3). Network cable tester
- 4). Polymer lithium ion battery (7.4V DC 7000mAh)
- 5). BNC cable
- 6). RS485 cable
- 7). SC,ST connector (Only for optical power meter)
- 8). Multi-meter test leads one pair of red and black (only for the Multi-meter models)
- 9). Output Power cable
- 10). Audio cable
- 11). TDR alligator clamp (only for TDR models)
- 12). Safety cord
- 13). Tool bag
- 14). Manual
- 15).8GB SD card

2.3 Function interface



1		Press more than 2 seconds, turn on or off the device ,short press to turn on or off the menu display
2		Menu key, press it to call shortcut- menu
3		Confirm key
4		Return/Close : Return or cancel while setting parameters of the menu, close or decrease the aperture
5		Multimeter interface (Optional)
6		The charge indicator: it lights red while the battery is being char
7		The RS485 data transmission indicator: it lights red while the data is being transmitted

8	The data received indicator: it lights red while the data is being received
9	The power indicator: it lights green while the tester is powered on by the adapter



19	EX/HD-SDI input (BNC interface) (Optional)
20	TDR cable test interface (Optional)
21	RS485 Interface: RS485communication for the PTZ
22	Power battery switch
23	DC 12V 2A charging interface
24	USB 5V 2A power output (used only for power, not data)
25	Audio input
26	Audio output and earphone interface
27	UTP cable port: UTP cable tester port/ Cable tracer port
28	Anti-sunlight board
29	Micro SD card moveable,(comes with 8GB, supports up to 32GB)
30	HDMI output interface

3. Operation


3.1 Installing the Battery

The battery main switch at the right-bottom corner of tester bottom.

“0”: Battery power off

“1”: Battery power on

The tester has built-in lithium ion polymer rechargeable battery, the tester’s bottom power should turn to “0” for safety during transportation (the factory default is “0”)

Using the instrument, pls switch power button to “1”, press the  several seconds can turn on/off tester. In general, user no need to turn on battery switch.if don’t use the instrument in long time, pls turn off the switch.




Notice: Pls use the original adaptor and connected cable of the device!




When the battery icon is full or the charge indicator turns off automatically, indicate the battery charging is completed



Notice: When the Charge Indicator  turns off, the battery is approximately 90%

charged. The charging time can be extended for about 1 hour and the charging time within 12 hours will not damage the battery.



Notice: Press the key  several seconds to restore the default settings when the instrument works abnormally.

Multi-meter: The red and black multi-meter pen must insert the corresponding port.



Warnings: Instrument communication port is not permitted access circuit voltage over 6V, otherwise damage the tester.



Warnings: Not allow insert multi-meter pen in the current terminal to measure voltage.

3.2 Instrument connection

3.2.1 IP camera connection

Power an IP camera with an independent power supply, then connect the IP camera to the IPC tester's LAN port, if the link indicator of the tester's LAN port is green and the data indicator flickers, it means the IP camera and the IPC tester are communicating. If the two indicators don't flicker, check if the IP camera is powered on or the network cable is not functioning properly.



Note:1) If the IP camera requires PoE power, then connect the IP camera to the IP tester's LAN port . The tester will supply PoE Power for the IP camera. Click on the icon labeled POE to turn the PoE Power off or on.

2) If use the tester's menu to turn off the tester's PoE power supply, the PoE switch and the power sourcing equipment are allowed to connect to the tester's PSE port, and the PoE power will be supplied to the IP camera by the tester's LAN port. On this condition, the tester cannot receive data from IP camera, but the computer connected to the PoE switch can receive the data via the the tester.



Warning: PoE switch or PSE power sourcing equipment only can be connected to tester "PSE

IN” port, otherwise will damage the tester.

3.2.2 Analog camera connection



- (1) Connect the camera's video output to the IP tester's VIDEO IN. The image will display on the tester after pushing the PTZ icon.
- (2) CCTV IP Tester "VIDEO OUT" interface connect to the Video input of monitor and optical video transmitter and receiver, the image display on the tester and monitor.
- (3) Connect the camera or the speed dome RS485 controller cable to the tester RS485 interface (Note: positive and negative connection of the cable).

3.2.3 HD Coaxial camera connection

* SDI/EX-SDI, CVI, TVI, AHD camera are classified as HD coaxial cameras. Hereby the following instruction of how to connect SDI camera to the tester is also applied to CVI, TVI and AHD cameras.



- (1) Connect the SDI camera's video output to the IP tester's "SDI IN" interface, the image will display on the tester. The tester only come with SDI input interface. There is no SDI output interface.
- (2) Connect the SDI camera or the speed dome RS485 controller cable to the tester RS485 interface (Note: positive and negative connection of the cable).

3.2.4 HDMI IN





DVR or other device's HDMI out port connect to tester's HDMI in port, the meter will display input image.

3.3 OSD menu

Press the key  2 seconds to turn on

Press the key  again to turn off

short press the key  to enter sleep mode, press it again to test.

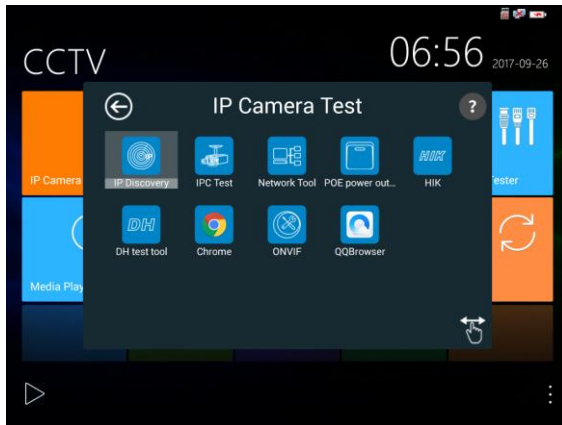
If tester works abnormally and cannot be turned off , Press the key  several seconds to turn off, the tester reset.


3.3.1 Lite mode & Normal mode

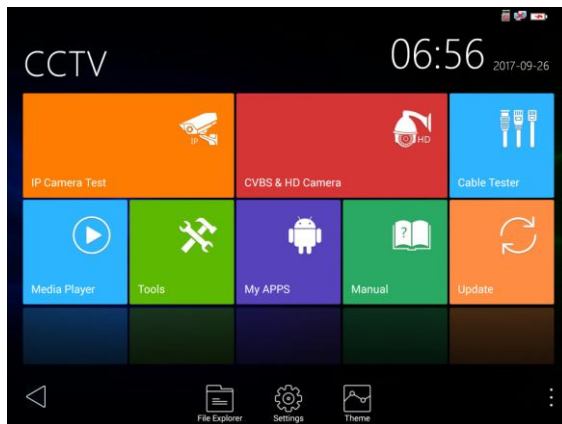
- **Lite mode:** You can easy find corresponding apps



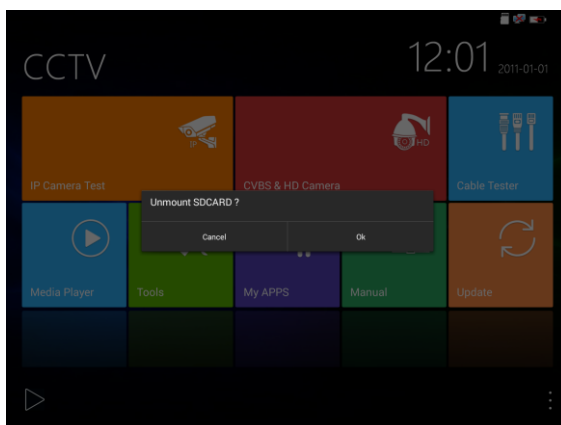
- In Lite mode, click the finger icon in the lower right corner till yellow, long press the icon to move the function icon to other items. Do not click the finger icon and long press the application icon, can move the icon in folder.



Click the bottom left corner "". can open File explorer, Setting and Theme functions.

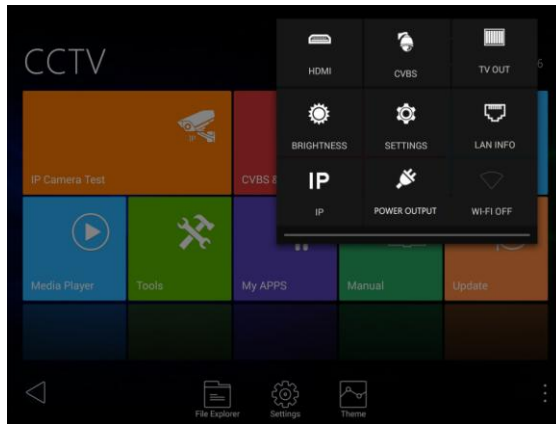


Click SD card, install or remove SD card.



3.3.2 Drop-down Menu

Press and slide at right top right corner twice to open shortcut menu. The shortcut menu includes POE power output, IP settings, Wi-Fi, HDMI IN, CVBS, Video OUT, LAN, Brightness, settings etc.



HDMI: Click HDMI IN to enter, in HDMI IN mode, it can convert test from analog to digital with dual test window IP & HDMI IN or Analog & HDMI in

CVBS: Click icon "CVBS" to enter, you can test IP and analog camera at the same time

Video OUT: Click "Video OUT" to enter floating window, connecting the BNC cable to tester and appears analog video monitor interface, it can test circuit and BNC cable whether normal.

LAN: Display network port or WIFI connection real-time upload and download speeds and other network parameters.

Brightness: Set brightness

Settings: Enter settings interface.

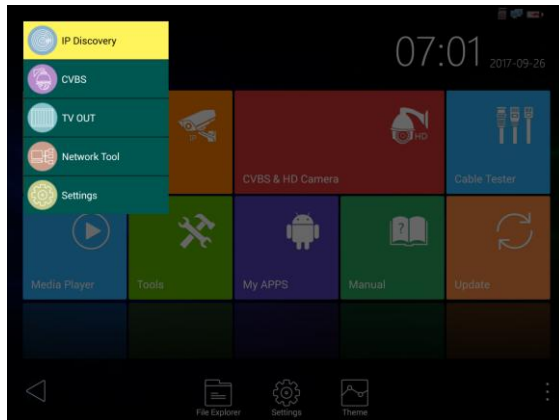
IP: Enter IP Settings interface.



POE power output: Turn on or off the tester "PoE power" app

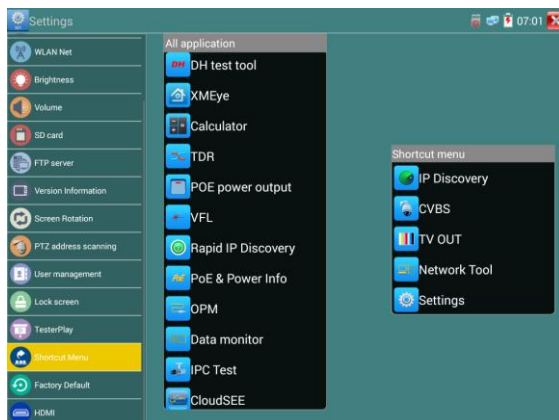
WLAN: Turn on WLAN net and displays current WLAN status.

3.3.3 Short cut menu

You can call shortcut menu by press tester's "menu" key, you can self-define shortcut menu.



Press the key“  ”, you can turn on it, and switch functions, then press  to enter app, tap other area on the screen, to exit the menu.



Short cut-menu setting, you can long press any app in the all applications list, it will auto move to shortcut menu. If delete any app in the shortcut menu, please select a app and press several seconds, it will be deleted.

3.3.4 Screen capture


Long press the key “enter”, can capture screen interface and save it in any time.

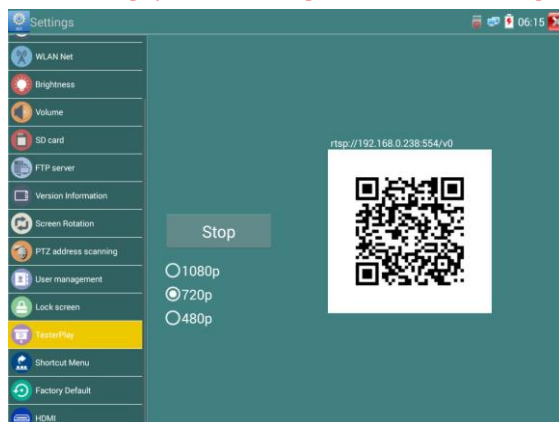


You can go file management to view “File management - SDCard - Pictures - Screenshots”.

3.3.5 TesterPlay

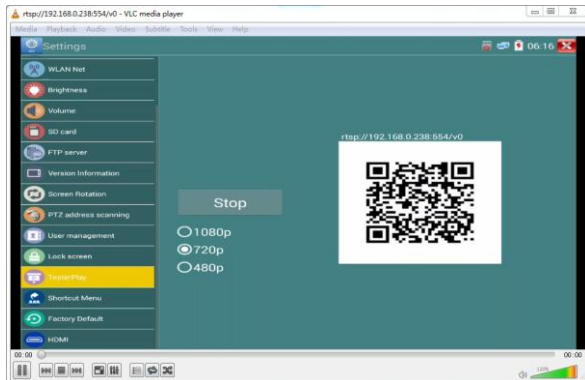
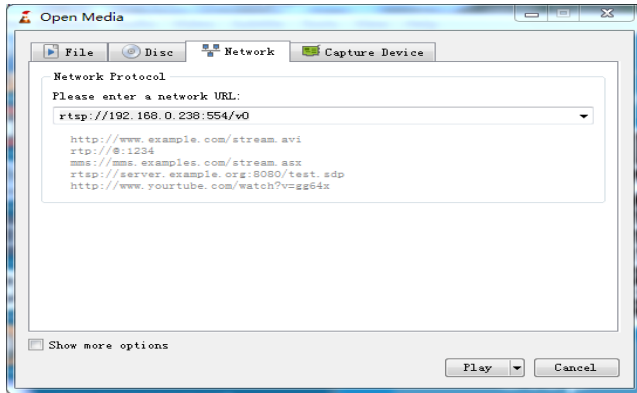
Mobile screen projection (Only for android version)

The meter creates WIFI hotspot, connect mobile phone to the tester’s WIFI hotspot, or the tester and mobile phone connect to the same Wi-fi network. Tap icon “”, then select “TesterPlay” app to enter, click “Start” button to generates two-dimensional code, Please use mobile phone Input Rtp., then you can view the screen real-time projection, the mobile phone need to install “Testerplay App” first.



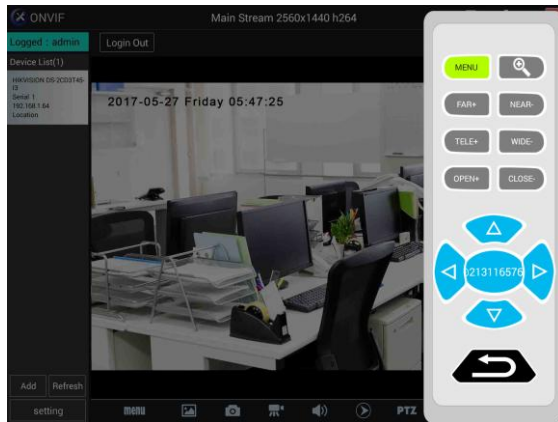
PC screen projection:

Install VLC player in the PC, turn on the VLC player "Media - Open Network Streaming", and input the RTSP address of on the top instrument two-dimensional code, click "play" to view the screen real-time projection. (you also can install "VLC player" in the mobile phone, tester and mobile phone display at the same time)




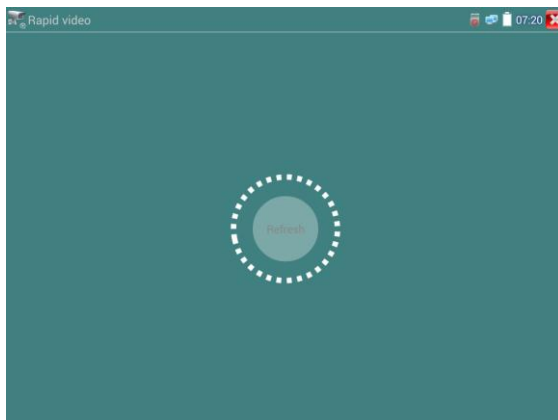
3.3.6 Built-in Keyboard

As ONVIF/IPC TEST/CVI/AHD/HDMI Input apps, slide screen from right to left, to call the keyboard, can zoom/Tele+/Tele- image and PTZ control.

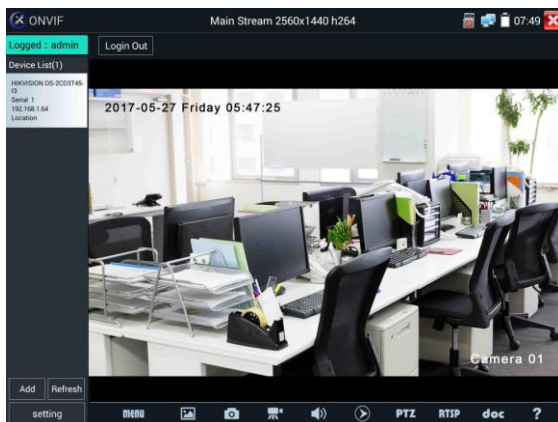


Rapid video

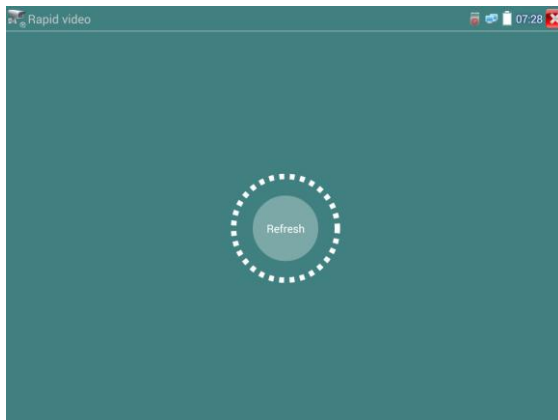
Press  enter function, One key to detect all network cameras and auto play the images.




Auto log in and display camera image. Detailed operation refer to ONVIF function.

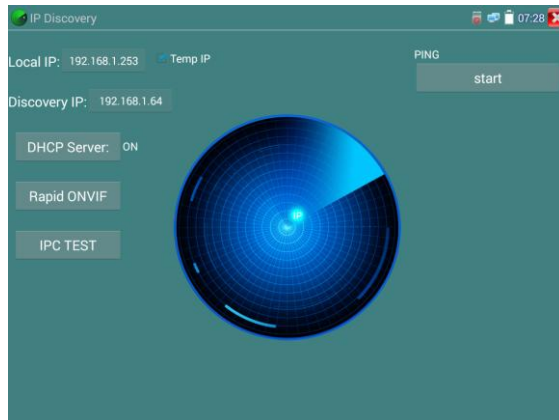


After exit ONVIF app, Click Refresh to search IP address.



3.3.7 IP discovery

Press IP discovery  , tester auto-scan the whole network segment IP, as well as auto-modify the tester's IP to the same network segment with the scanned camera's IP.



Local IP: Tester's IP address, Tester can auto-modify the tester's IP to the same network segment with the scanned camera's IP.

Discovery IP: Connected tester equipment's IP address. If the camera connected to the tester directly, tester will display the camera's IP address, if tester connects to Local Area Network, it displays the current IP address.

Temp IP: After searching IP address, the modified tester's IP address will not be saved, if you do not select "Temp IP", the tester's IP address will auto-save after searching.

Start: PING function, Click "Start", can PING camera's IP.


Rapid ONVIF: Rapid ONVIF Quick link

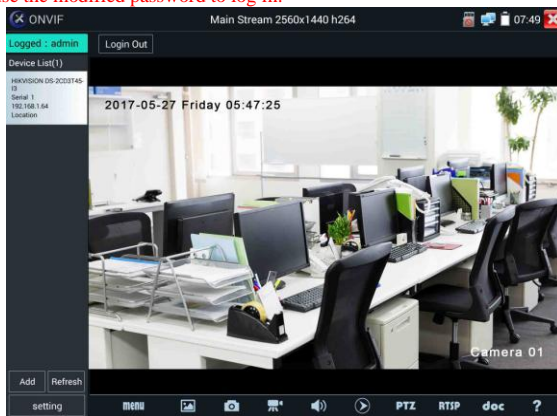
IPC TEST: IPC TEST Quick link

Applicability: Using IP discovery app, you don't need to know the first two digits of camera's IP address, it can auto-scan the whole network segment IP, and auto-modify tester's IP address, greatly improved engineering efficiency.

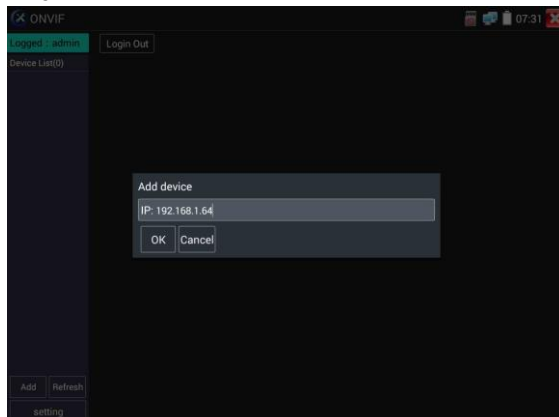
3.3.8 Rapid ONVIF test

Rapid ONVIF can display 4K H.265/H.264 camera image by tester mainstream, one key to activate Hikvision camera.

Press  enter ONVIF function, the meter auto scan all ONVIF cameras in different network segments. It lists cameras name and IP address on the Left of screen. Tester can auto login camera and display camera image. Factory default use admin password to auto login, if you modified the password, then default use the modified password to log in.

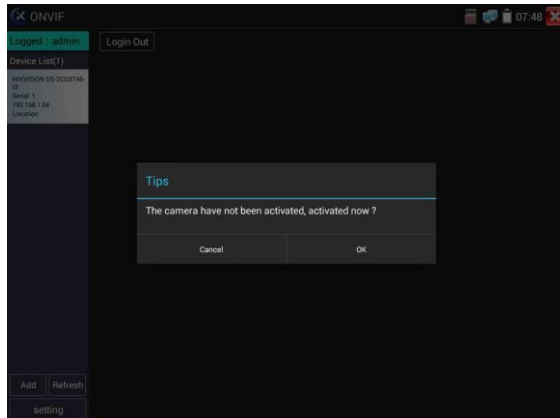


If you select ONVIF Rapid mode, the meter automatically scan different network segments for ONVIF cameras. It lists the camera name and IP address on the Device List. Tester can auto login camera and display camera image.

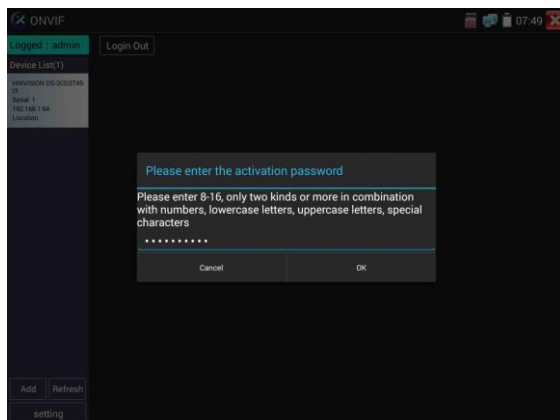


Click the button “Refresh”, tester will scan the ONVIF camera again. Click the newly displayed ONVIF camera on the “Device List”. The tester will show the IP camera’s relative information and settings.

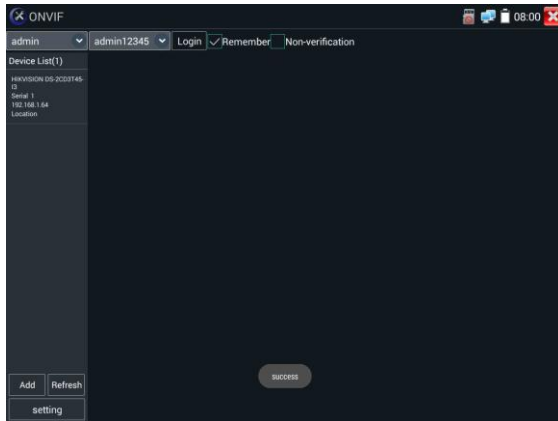
Activate HIKVISION Camera: When connected unactivated HIKVISION Camera, tester can auto recognized ,And prompt "The camera have not activated, activated it", click "OK" to start activate.



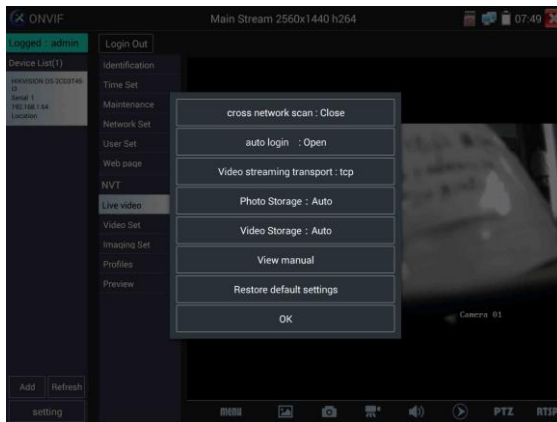
Enter a new password for the camera.



When comes out “activate success” prompt, click login to display camera image.



Pop-up settings menu when click the “ONVIF setting” icon in the upper left corner



Across network segments scan: After open this function , enter “Setting - IP Settings - Advanced” to add other network segments IP, Rapid ONVIF function can across network segments to scan camera’s IP.

Auto Login : After open this function, tester can auto login camera and display camera image. (The login password is the same with last time, the first time using password is the default password "admin")

Video transmission protocol: UTP and TCP protocol.

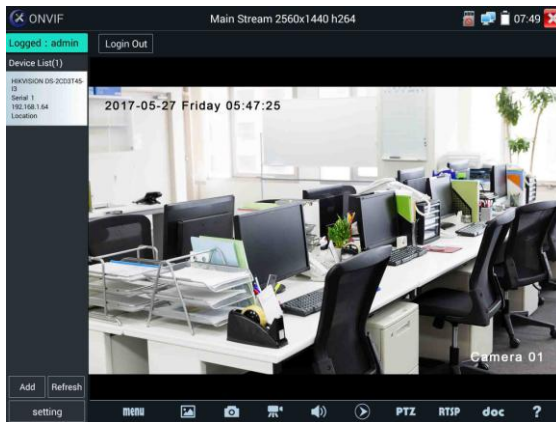
Open password cracker: Cracks password of cameras.

View manual: Open Manual.

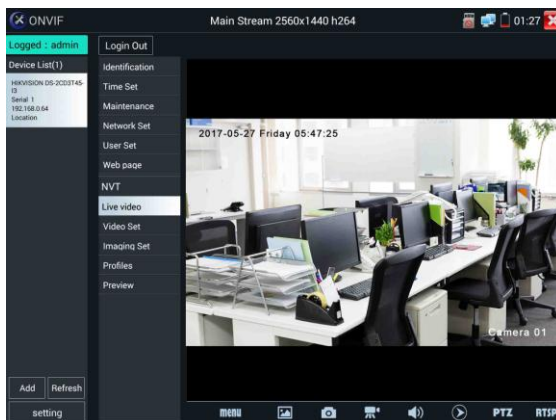
Restore Defaults: Revert “Rapid ONVIF” to default settings.

Confirm: Save the modified parameters.

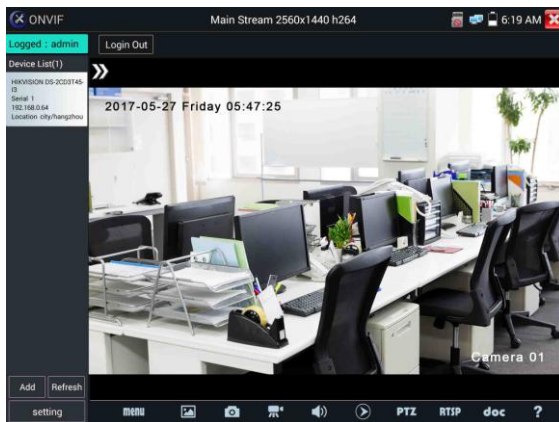
Click “MENU” icon to open camera setting.



While in the “Live video” menu, click “Video Menu” at the top right of the image to access the following tools: Snapshot, Record, Photo, Playback, PTZ and Settings.



ONVIF PTZ control: Tap the image in the direction you want the PTZ camera to move. Tap the left side of the image to move left, right to go right, up to go up and down to go down. Compatible IP PTZ cameras will rotate accordingly. PTZ rotation direction is displayed on top left corner of the image.



IP camera video settings: Click “Video Set” to enter the IP camera’s encoder and resolution settings. Make the desired changes and click “OK” to save.

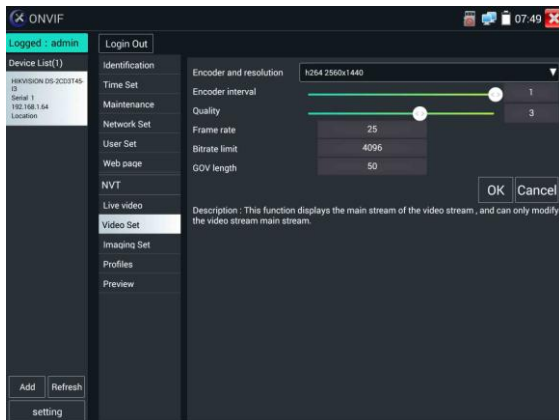
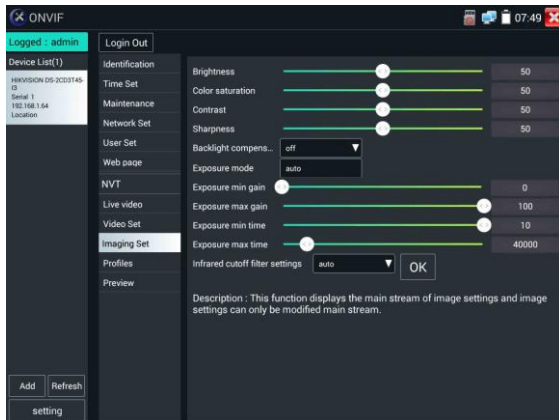
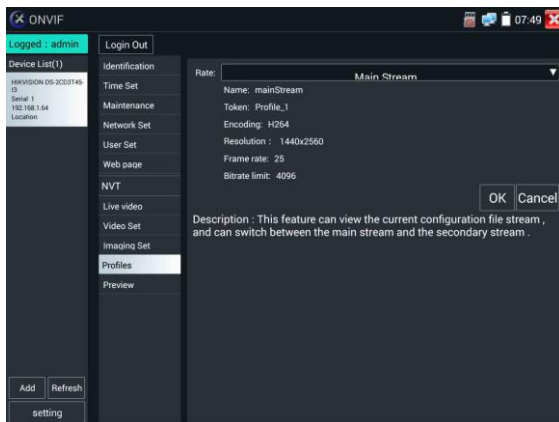


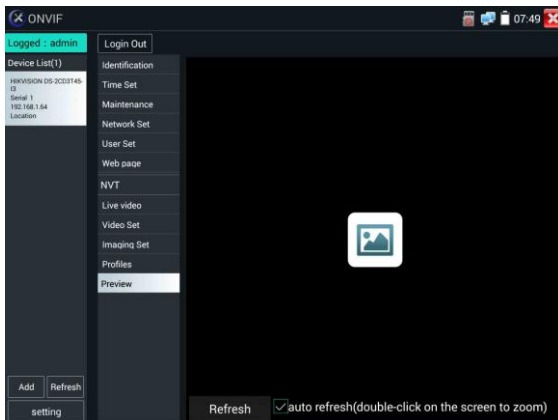
Image setting: Click “Imaging Set” to adjust image brightness, saturation, contrast, sharpness and backlight compensation mode.



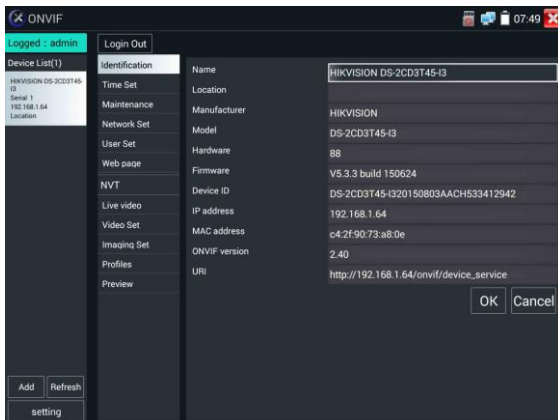
Profiles: Click “profiles”, can view video streaming current configuration files, as well as switch between Major stream and minor stream.



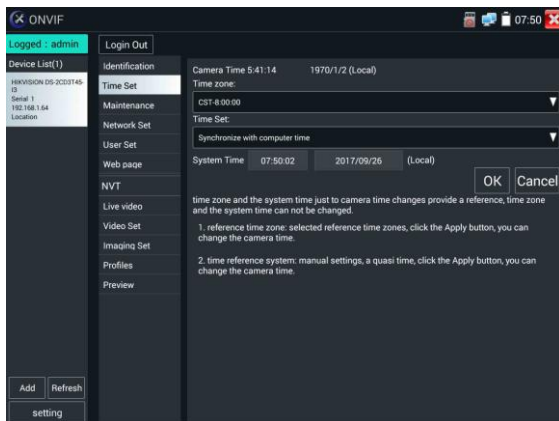
Preview pictures: Quickly preview and zoom in or out pictures, automatically and manual refresh.



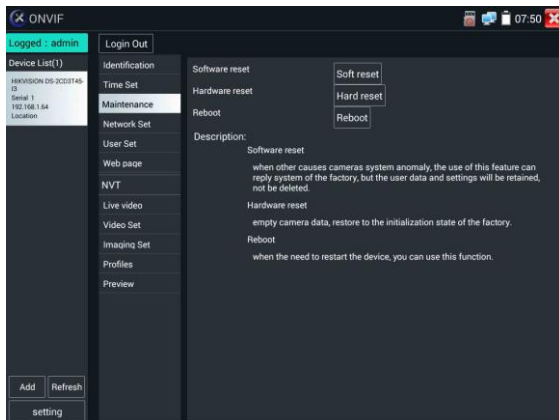
Identification: Click “Identification” to view information of the camera.



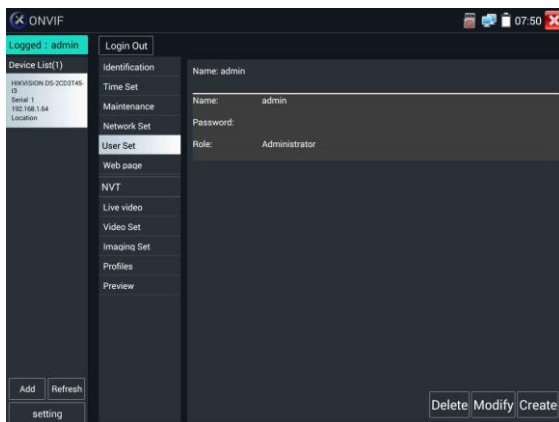
Time set: Click "Time set", Select "Manual set" to set up the time of camera.



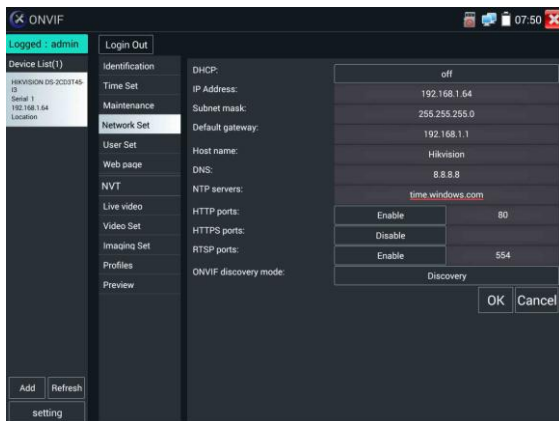
Maintenance: For camera software reset or restore to factory settings.




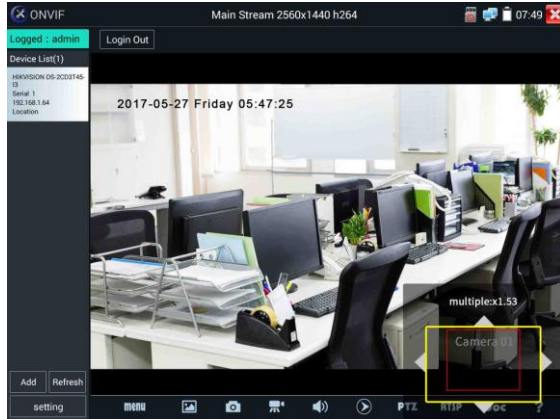
User Set: Modify camera user name,password etc parameters.





Network setting: Click “Network Set” to change the IP address. Some cameras cannot support change IP address, so there is no change after saving.



Zoom in image: Press the  key to enter the zoom mode. Press it again to exit zoom mode. When the image is enlarged tap left, right, up or down on the image to move the whole image on the screen.

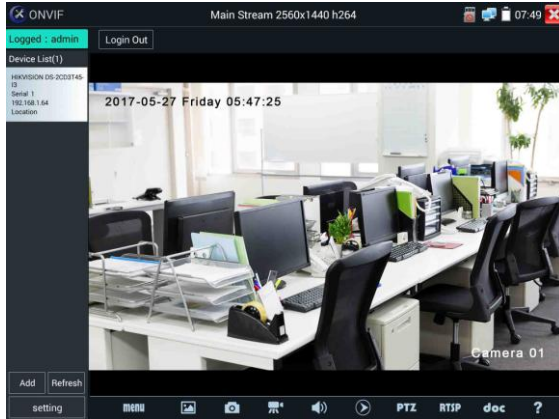


When the image is enlarged, if not operate on touch screen, it can operate by the keyboard, press the key  to zoom in , press the key  to zoom out , press upward and downward key to move image.

If it is network video input to the tester, as the tester supports resolution up to 1080p, the input image will be very clear after it is enlarged. This is greatly helpful for the installers to ensure the IP camera's video coverage and decide the IP camera's install site.

Image can only be enlarged on SD mode (The icon "ONVIF" is SD mode.)

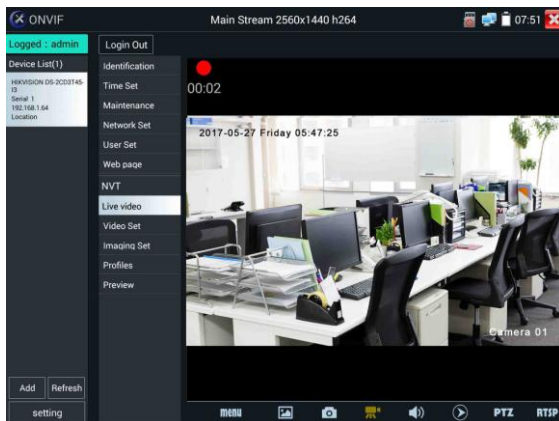
Select relative function on the bottom Toolbar to operate, “Snapshot”, “Record”, “Photos”, “Video playback”, “Storage set”, “PTZ control” etc.



Snapshot: Click **bottom** “snapshot” to screenshot the image and store it to SD card.

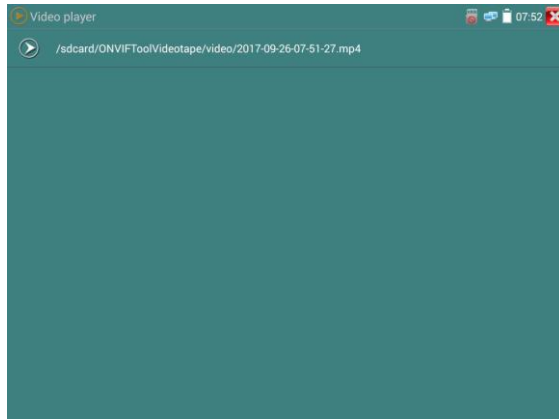
if select manual storage, appears dialog box “Input Name”, user-defined the files name(by Chinese character, English letter or digit) to save in SD card, if select “Auto- storage”, the tester auto stores the files after snapshot.

Record: When you click **bottom** the “Record” icon, video starts recording. A red recording icon appears on the screen and begins to flash and a timer appears indicating the time elapsed for the video. Click on the “Stop” icon to stop recording and save the video file to the SD card.

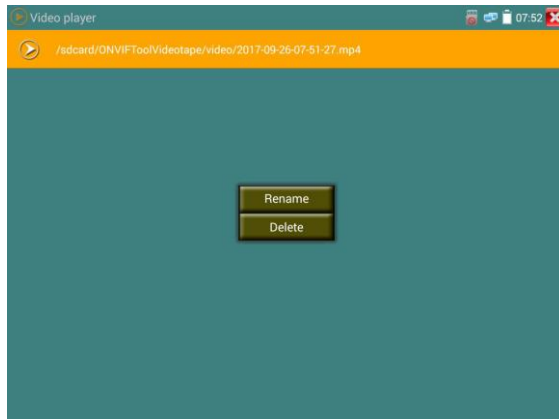


Playback: Click the “Playback” icon to view saved videos. Double click the video you want to play.

Click to return to the last menu.



To rename or delete a photo, click and hold on the file until this screen appears:



Video files can play in the Video player on the main menu.

PTZ

Set preset position: Move the camera to preset position, enter the preset number on the Bottom right corner to complete position preset.

Call the preset position: Select the preset number on the left, click "Call" to call preset.

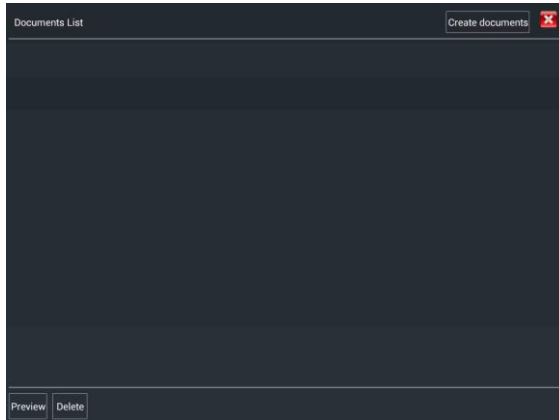


PTZ Speed set: Horizontal and Vertical Speed set.



RTSP: Get RTSP address of the current camera.

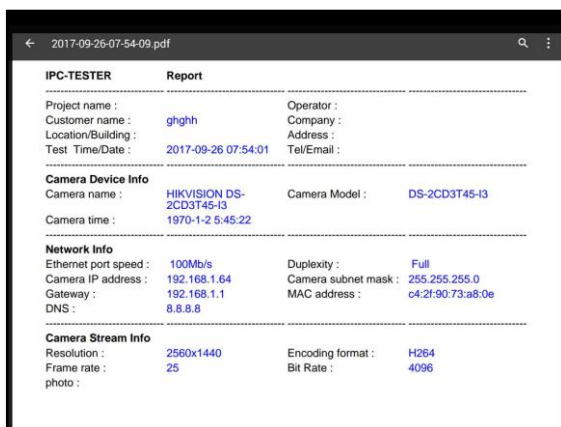
Doc: Auto create testing reports document of camera, click "Create document". Click Preview to view the report document.



Enter the camera test information, click "Create Document" to complete the report.

A screenshot of a web application form titled "Enter simple message". At the top right, there is a button labeled "Create documents" with a red 'X' icon. The form contains several input fields: "Job/Project name:", "Operator:", "Customer name: ghgh", "Company:", "Location:", "Address:", and "Tel/Email:". Below these fields is a button labeled "choose photo". At the bottom left, there is a note that says "**can skip".

Click “Doc” menu again, you can preview the report document.



Icons description: The description of function icons on the bottom toolbar.

3.3.9 IP camera test

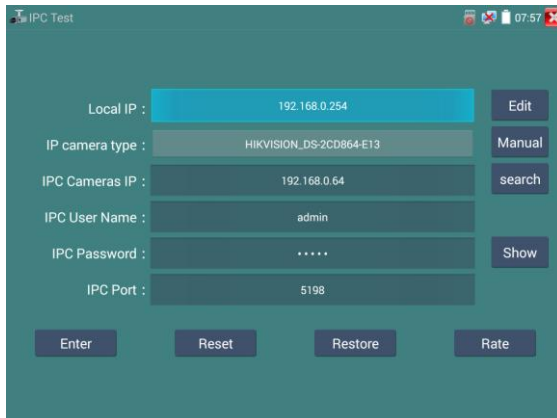
Display image from the 4K H.265 camera by main stream

Click icon  to enter IP camera test



Note: Currently, the IPC Test App only supports some brands' specific IP cameras, these include specific models made by ACTI, AXIS, Dahua, Hikvision, Samsung, and many more. If the camera is not fully integrated, please use the ONVIF or RTSP apps.

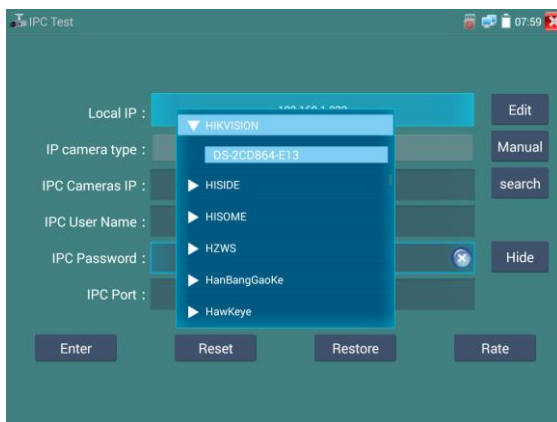
IPC test interface



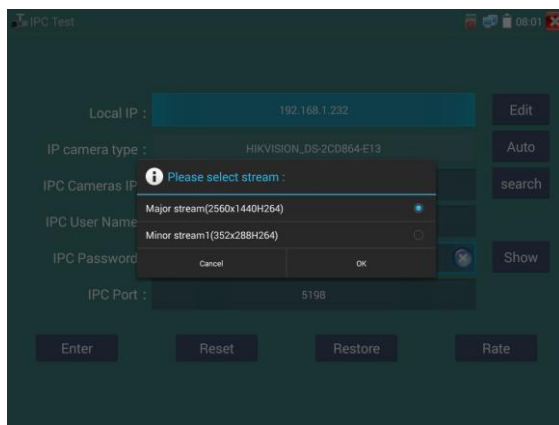
Local IP: This is the tester’s IP address. Click “Edit” to enter “IP setting” and change the tester’s IP address settings.

IP camera type: Click on the IP Camera type to select the Manufacturer and model number of the integrated IP camera.

“Manual”: Click IP camera type, list Honeywell , Kodak,Tiandy, Aipu-waton, ACTi,WoshiDA IP camera etc. If the brand has offered official original protocols, pls select camera type, input IP camera address, user name and password, click “official” to enter the camera image display interface(Currently, only support DAHUA official protocols).



Stream code: When test camera via RTSP, you can select mainstream or sub stream to test (if camera's RTSP have not been start or without, it will tip "auto match" fail, please witch to manually selecting.



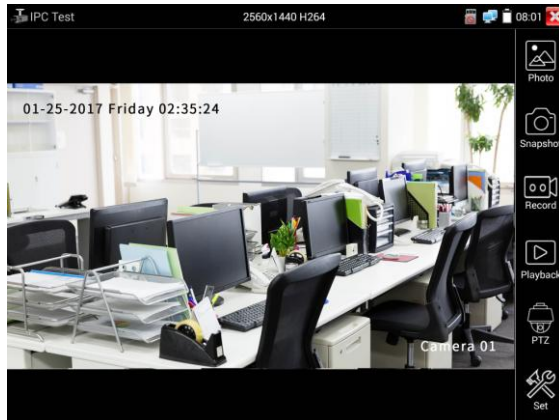
IP Camera's IP: Enter the IP camera's IP address manually or click "Search" to auto-scan for the camera's IP address. It is better to directly connect the IP camera to the tester so the search results will only display the camera's IP address. If the tester is connected to a PoE switch, it will find and display several IP address.

IPC User Name: Enter IP camera's user name.


IPC Password: Enter IP camera's login password.

IPC Port: When you select the IP camera type, it will default the camera's port number and doesn't need to be changed.

After all settings are completed, click "Enter" to view the live video.



If IP address setting has error or IP camera is not connected.. The tester prompts “Network Error”.

Click  to quit from image display and return to IP camera test interface.



Once you are viewing video on the IPC Test app, you will see the “Video Menu” icon on the top right. This button will give you access to Snapshot, Record, Photo, Playback, PTZ, and Set. Please refer to the ONVIF section to use these functions.

3.3.10 HDMI IN

HDMI in HD signal test, Tap icon “” to enter

When tester receives HDMI in image, the top tool bar shows the resolution of this image. You can select “resolution” to set resolution in the setting menu. Tap screen by twice, full image display.

Support resolution below

720×480p /720×576p /1280×720p /1920×1080p /1024×768p/1280×1024p /1280×900p /1440×900p



(1) Snapshot

Click the icon “Snapshot”, when the video in, to take a picture and save the current video frame in the SD card as JPEG file.

If the unit is set to the manual mode an “Input Name” pop up box will appear and you can enter a title for the snapshot. If the unit is set up to automatically set file names, this box will not pop up.



(2) Video record

When you click the “Record” icon, video starts recording. A red recording icon appears on the screen and begins to flash and a timer appears indicating the time elapsed for the video. Click on the “Record” icon again to stop recording and save the video file to the SD card.

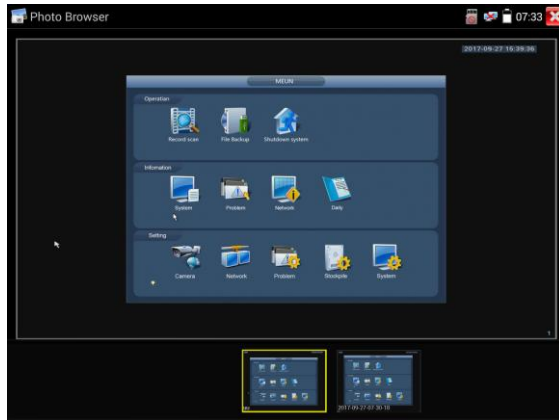
If select manual storage, before recording begins, appears dialog box “Input Name”, user-defined the files name(by Chinese character, English letter or digit) to store in SD card , tester will hereby store the files in SD card after recording. if select Auto-storage, tester will auto store the files in SD card after recording.



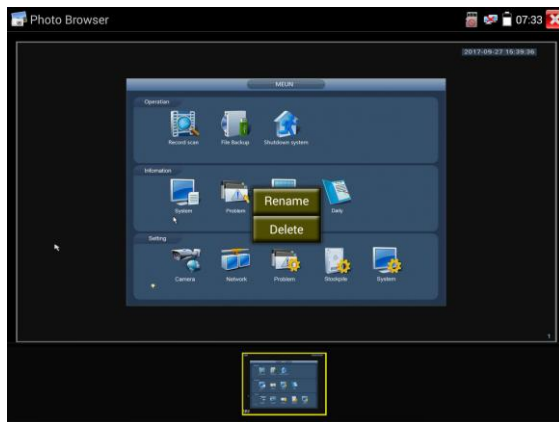
(3)Photo


Click the icon “photo” to enter, click the selected thumbnail photo to display it on the screen.

Double-tap the image can view full screen. Double-click again the photo to return.



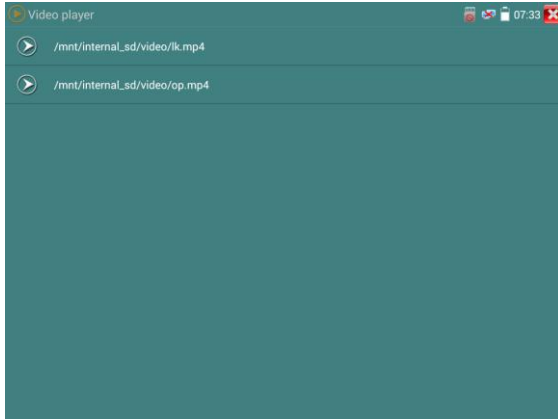
To rename or delete an image, click and hold on the file until this screen below appears



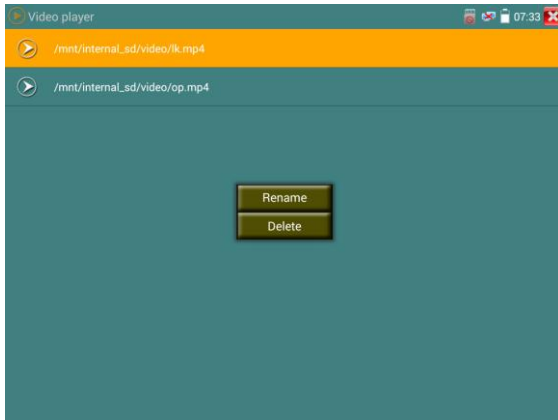
Click  to close and return to PTZ controller.

(4) Recorded video playback

Click the “Playback” icon to view your recorded videos. Tap on the video file image you want to watch.




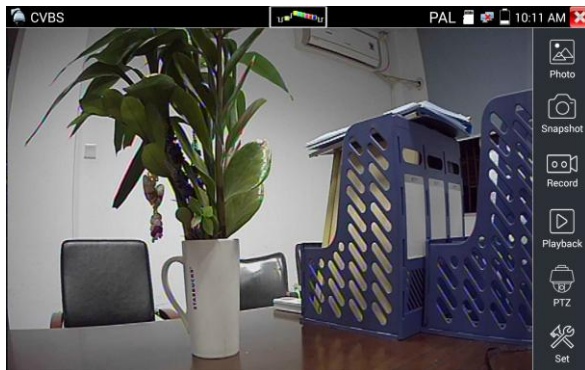
To rename or delete a video, click and hold on the file until this screen appears:




Video files also can play in the main menu “Video Player”.



3.3.11 Video monitor test

Analog camera test and PTZ control, click icon  to enter



Display the input video image, click the top menu bar icon  to enter video level meter (PEAK level, SYNC level, COLOR BURST measurement)

Select relative function on the right side Toolbar to operate , functions including “Photos”, “Snapshot”, “Record”, “Playback”, “PTZ”, “Set”,

Click  or press  to quit.

Click the screen twice quickly, can be full zoom in on the touch screen.

(1) PTZ controller parameter setting

Select and click icon “PTZ” to enter PTZ setting:



A. Protocol

Use the up and down arrow keys to move the yellow cursor to the “protocol”, set corresponding Protocol and support more than thirty PTZ protocols. Such as Pelco-D,Samsung,Yaan,LiLin,CSR600,Panasonic,Sony-EVI etc.

B. Port

Click and move, to “port” Select the communication port for the PTZ camera controlling (RS485)

C. Baud

Move the yellow cursor to “Baud”, Select the baud rate according to baud rate of the PTZ camera.(150/300/600/1200/2400/4800/9600/19200/57600/115200)

D. Address

Set the ID according the ID of PTZ camera (0~254), the setting address data must be consistent the speed dome address.

E. Pan speed: Set the pan speed of PTZ camera (0~63)

F. Tilt speed: Set the tilt speed of PTZ camera (0~63)

G. Set preset position (Set PS)

Click and select “Set PS”, set and save preset position number(1~128).

H. Call the preset position (Go ps)

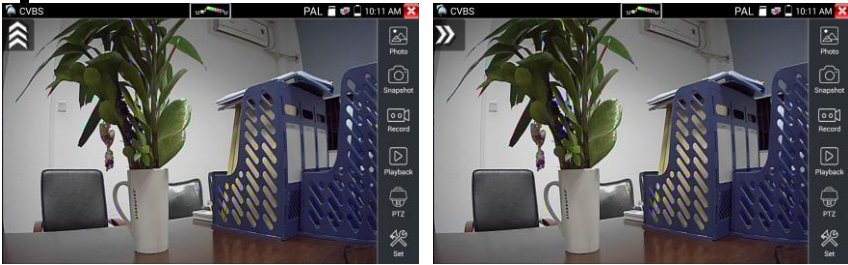
Click and select “Set PS”, set and save preset position number (1~128), click “sure” to save, Call some special preset number, can call the dome camera menu.



Check and set the protocols, address, interface and baud, all must be consistent with the dome camera, then the IPC tester can test .After setting the parameter, the tester can control the PTZ and lens.



To control PTZ by screen touch:

Tap left, right, upward and downward on the touch screen to control the PTZ rotation direction. By two fingers move outward and inward on the touch screen to zoom in and out the PTZ.



PTZ Control:

Press the key     control the PTZ direction of rotation

Press the key  or , to switch on or turn off the aperture.

Press the key  or , adjust the focus manually

Press the key  or , manually adjust the zoom


(2) Video and storage setting

Click icon “set” to enter and set analog video image brightness, contrast, color saturation, as well as the file storage way after snapshot and recording, support auto-storage and manual storage.

When select manual storage, user can name and store the files.



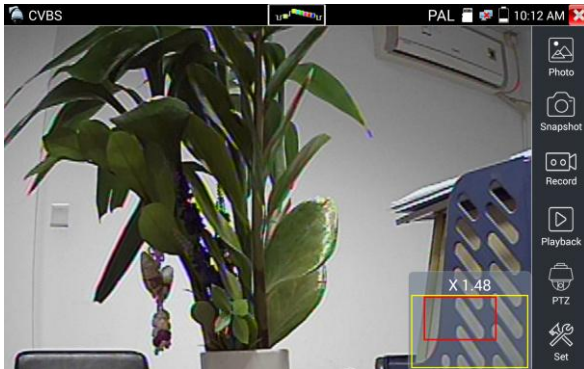
(3) 4 x zoom image display and Video out

When image input, press  to enter “zoom”, press it again to quit.

Using the touch screen to control PTZ camera movement:

Tap left, right, upward or downward on the video image to move the PTZ camera in a desired direction.

Stretch two fingers outward or inward on the touch screen to zoom the image in or out.



If not use touch screen to operate, press the key to zoom out , press the key to zoom in, press upward and downward key to move the image.



For analog video input, as the resolution is 720*480, it is normal that the zoom in image is not clear. But for network digital video input, as it supports resolution up to 1280*960, the zoom in image is still very clear. This is very helpful for IP camera installation.

(4) Snapshot

Click the icon “Snapshot”, when the video in, to take a picture and save the current video frame in the SD card as JPEG file.

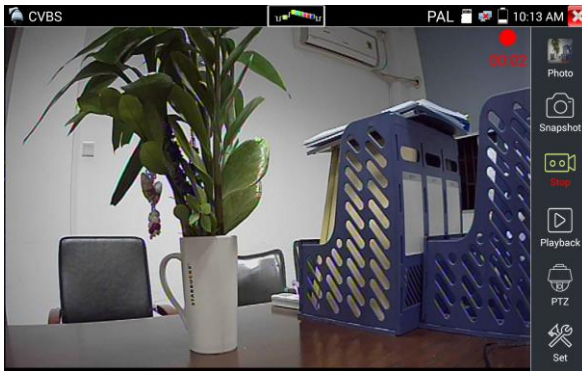
If the unit is set to the manual mode an “Input Name” pop up box will appear and you can enter a title for the snapshot. If the unit is set up to automatically set file names, this box will not pop up.



(5) Video record

When you click the “Record” icon, video starts recording. A red recording icon appears on the screen and begins to flash and a timer appears indicating the time elapsed for the video. Click on the “Record” icon again to stop recording and save the video file to the SD card.

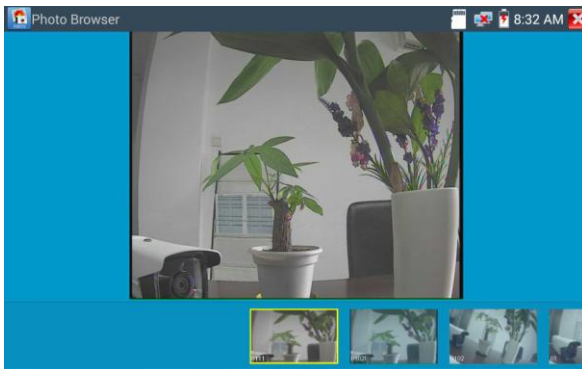
If select manual storage, before recording begins ,appears dialog box “Input Name”, user-defined the files name(by Chinese character, English letter or digit) to store in SD card, tester will hereby store the files in SD card after recording. if select “Auto-storage”, tester will auto store the files in SD card after recording.



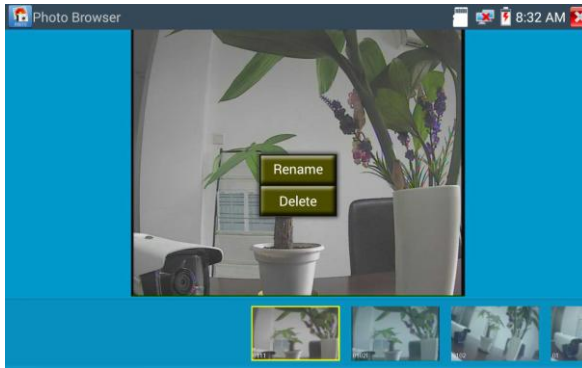
(6)Photo


Click the icon “photo” to enter, click the selected thumbnail photo to display it on the screen.

Double-tap the image you want to view to make it full screen. Double-click again the photo to return.



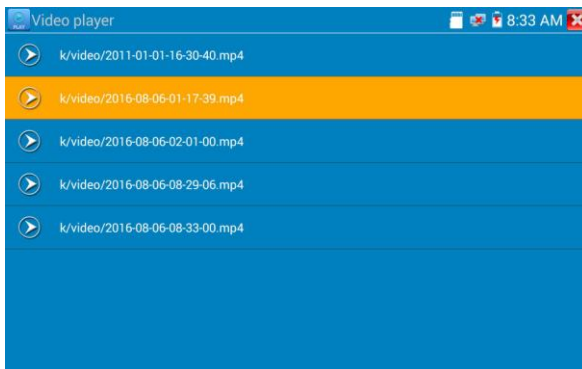
To rename or delete an image, click and hold on the file until this screen below appears



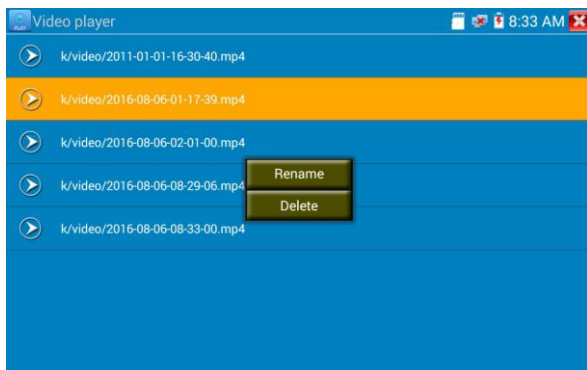
Click  to close and return to PTZ controller.

(7) Recorded video playback

Click the "Playback" icon to view your recorded videos. Tap on the video file image you want to watch.




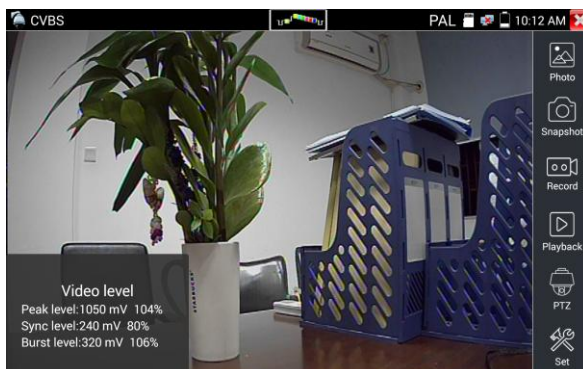
To rename or delete a video, click and hold on the file until this screen appears:



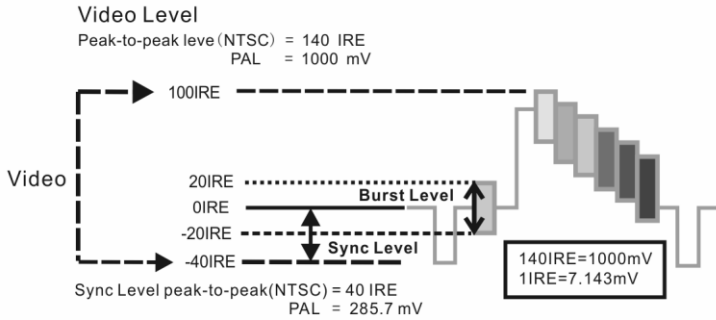
Video files also can play in the main menu "Video Player".

(8) Video level meter

Click the icon  to enter, the IP camera tester has adopted hardware high-speed sampling and processing technology, can perform both NTSC and PAL video amplitude signal measurements for PEAK to PEAK, SYNC levels and COLOR BURST chroma level. When an analog signal is fed into the meter, the tester displays the measurements on the bottom left corner of the screen



While in PAL format, the unit will be mV, While in NTSC format, it will be IRE.



NTSC	Video signal level	140±15IRE
	Chroma level(COLOR BURST)	40±5IRE
	SYNC signal level	40±5IRE
PAL	Video signal level	1000±200mV
	Chroma level(COLOR BURST)	300±35mV
	SYNC signal level	300±35mV

Video signal PEAK to PEAK level:

For NTSC format, the video signal level is 140±15IRE

For PAL format, the video signal level is 1000±200mV

If the level is too low, it will cause the image to lose quality and limit the distance it will travel over cable. If the level is too high, it will distort the image.

SYNC level: Tests the amplitude of the video sync pulse to verify if the video level is correct.

For NTSC format, the SYNC level is 40 ± 5IRE

For PAL format, the SYNC level is 300 ± 35mV

If the level is too low, it will cause the image to not frame out properly. If the level is too high, it will lead to a poor quality image.

COLOR BURST level: Testing the color burst level will determine if the burst signal is sufficient to trigger the displays color producing circuit. Burst will diminish in amplitude over longer cable runs and can get fall below the threshold for the video display to show a color image.


For NTSC format, the Chroma standard level is 40 IRE

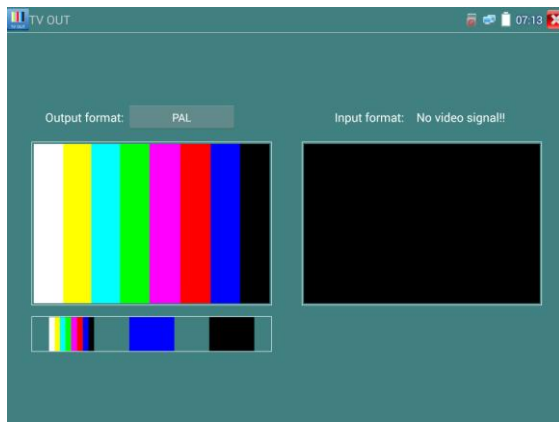
For PAL format, the Chroma standard level is 280mV

If the Chroma level is too low, the color will not be as deep, and some details of the image will become lighter. If the Chroma level is too high, there will be distortions on the image. If the coaxial cable is too long, it will reduce the chroma level.

Image loop test: Test video optical transmitter and receiver and video cable, connect one end to the tester "VIDEO OUT" port, and the other end connected to "VIDEO IN" port, the signal send via "VIDEO OUT" port, and received via "VIDEO IN" port, If the testing is ok, the tester displays several gradually dwindling photos on the desktop.

3.3.12 Color-bar generator (TV OUT)

Click  to enter, the tester sends the color bars from the "Video out" port, Click the icon "PAL", select "PAL/NTSC" output formats



Click the selected color-bars, testing image or single bar (red, green, blue, white or black). Double click to full display on the screen and output, click  to return main menu.

Application



BNC loop test: Tester can send and receive color bar generator through the tester's "video out and video in" port, it is for testing transmission channels, such as video Optical, video cables etc. The tester "VIDEO OUT" port to connect optical terminal's sending port, and "VIDEO IN" Port to optical terminal's connect its receiving port.

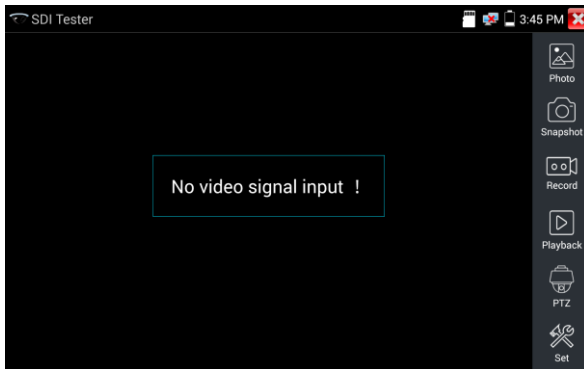
- A. When maintaining the dome camera, the tester sends out the color bar by its BNC output to the monitor at the monitoring center. If the monitor receive the color bar, it means the video transmit channel works normally. Meanwhile on the basis of the received color bar, the monitoring center can judge if transmission has loss or interference.
- B. The tester sends out the pure color bar (such as white and black color), to test the monitor whether has bright or black dots
- C. The tester sends out video signal image to test if the image received by the monitor has excursion.

3.3.13 SDI/EX-SDI Camera Test (*Optional)

SDI camera test, Dome camera test and PTZ control, click icon



to enter.

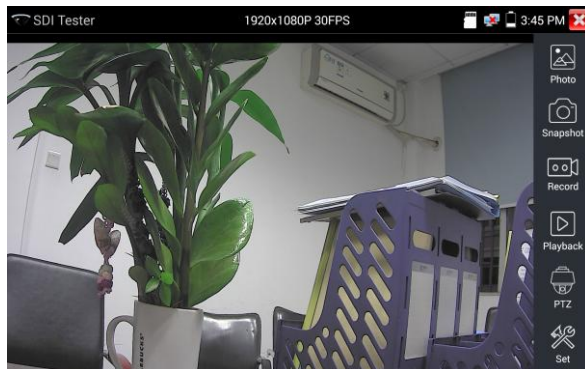


When tester receives SDI camera image, it will display the image data.

Double-taps on the screen to make the image displayed full screen.

The tester supports resolution as follows:

- 1280x720P 25Hz
- 1280x720P 30Hz
- 1280x720P 50Hz
- 1280x720P 60Hz
- 1920x1080P 25Hz
- 1920x1080P 30Hz
- 1920x1080I 50Hz
- 1920x1080I 60Hz




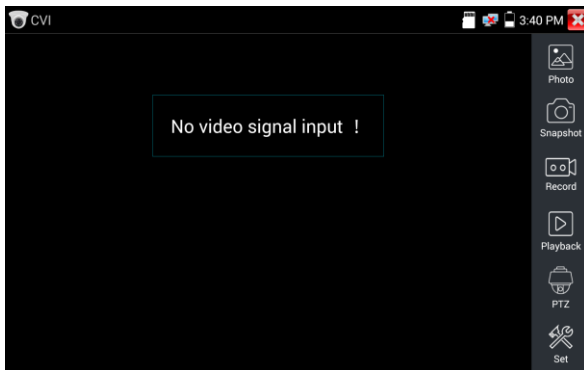
IPC tester's HDMI output port can be used as SDI to HDMI converter, output HD SDI image to HD TV monitor.

Select relative function on the right side Toolbar to operate, "Snapshot", "Record", "Photos", "Video playback", "PTZ control", "Video Brightness and Storage set", the operation is the same to the video monitor function, please refer to the relevant instructions "3.3.1" in the manual.

Click , or press  to quit.

3.3.14 CVI camera test (*Optional)

HD CVI camera, CVI dome camera test and PTZ control, click icon  to enter



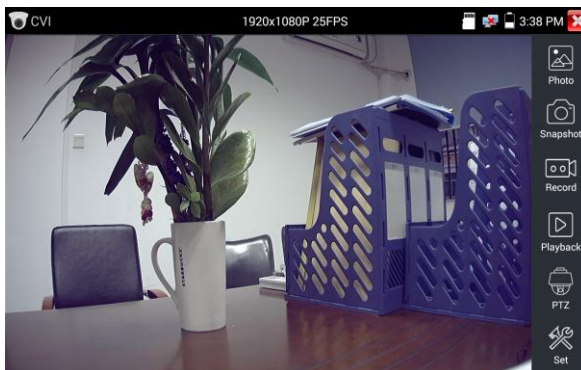
When HD CVI signal input, the tester will display the image resolution on the top bar. Double-taps on the screen to make the image displayed full screen.

The tester supports resolution as follows

1280x720P 25FPS / 1280x720P 30FPS / 1280x720P 50FPS / 1280x720P 60FPS

1920x1080P 25FPS / 1920x1080P 30FPS/**2560x1440P 25FPS/2560x1440P 30FPS/3840 x 2160**

12.5/15 FPS.

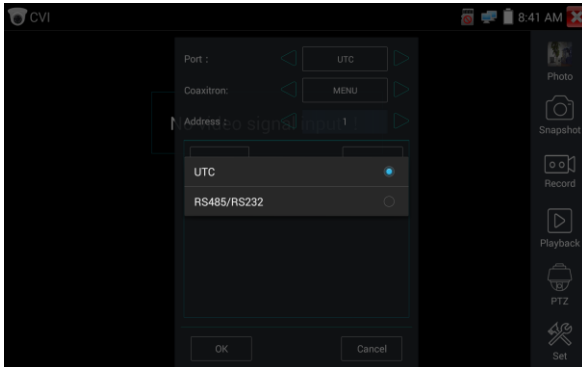


(1) PTZ control

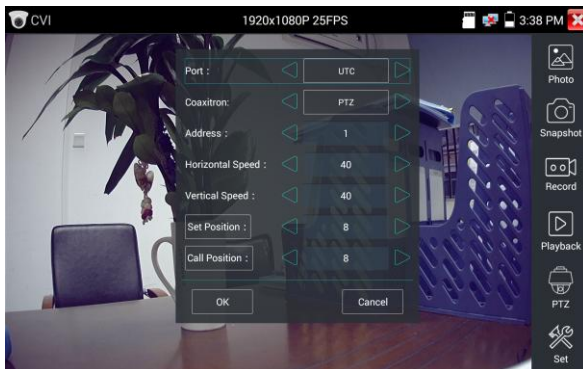
1.1 Coaxial PTZ control

Click the icon“PTZ”on the right toolbar to do the corresponding setting.

“Port”: select coaxial control



Enter PTZ address to perform parameters setting.

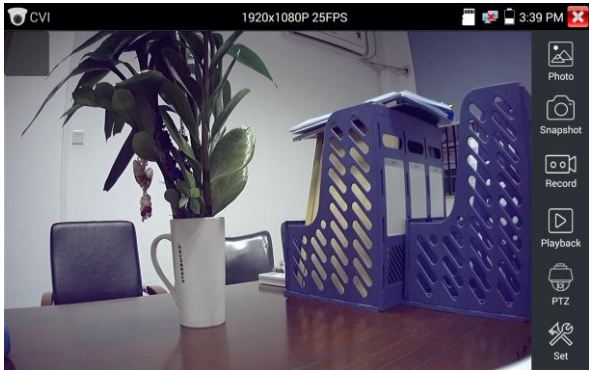


Operation instructions, please refer to “3.3.1 PTZ (1) Video monitor test”.



The PTZ address in the tester must be consistent with the dome camera or decoder, then the IPC

tester can test .After setting the parameter, the tester can control the PTZ and lens.





To control PTZ by screen touch:

Tap left, right, upward and downward on the touch screen to control the PTZ rotation direction, PTZ cameras will rotate accordingly. By two fingers move outward and inward on the touch screen to zoom in and out the PTZ.

To control PTZ by key buttons

Press the key   control the PTZ direction of rotation

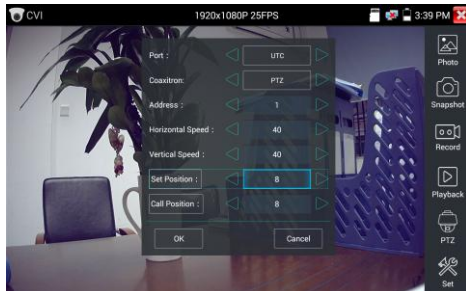
Press the key  or  , to switch on or turn off the aperture

Press the key  or  , adjust the focus manually

Press the key  or  , manually adjust the zoom

Set preset position

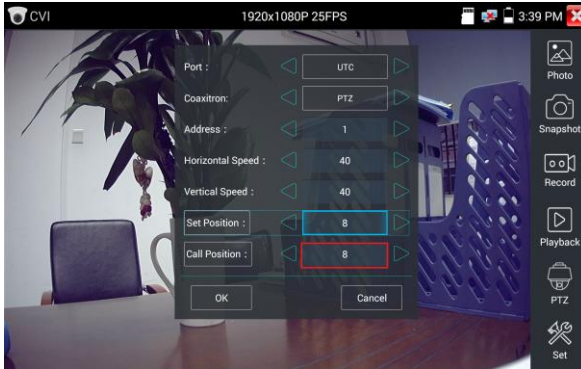
Setup preset position: Move the PTZ camera to the preset position, then Tap it and input preset position number. Tap “Set position” to complete set preset position.



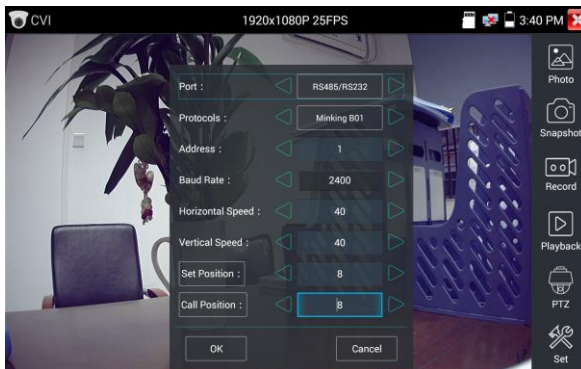
Call preset position

Tap the preset position:

Tap the preset position area, input preset position number. Tap “call position” to complete call preset position.



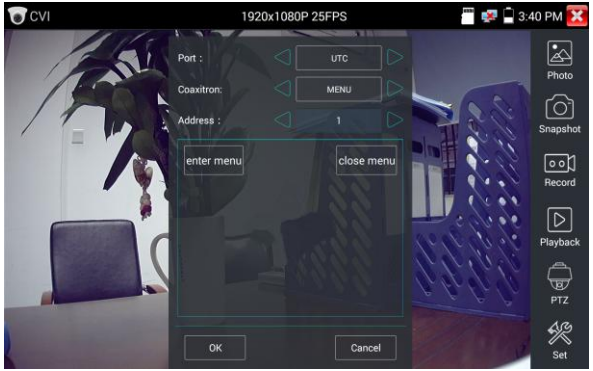
1.2 RS485 control




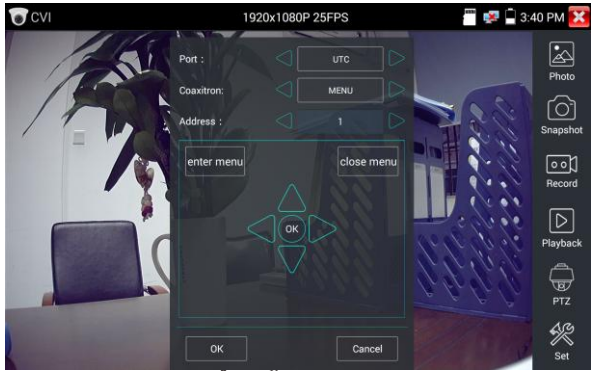
Operation instructions, please refer to “3.3.1 PTZ (1) PTZ control parameters setting”.

(2) Coaxial camera menu setting

Tap icon “UTC”, select “menu setting” to enter the dome camera menu.



Input calling dome camera menu address code, after finishing the parameter settings, you can press the key or click the icon  to call the dome camera menu.

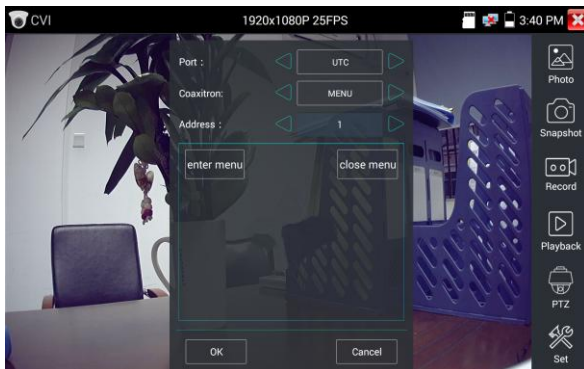


Press arrow keys     to set.



(3) Snapshot, record, photo viewer and video play back, please refer to “3.3.1 PTZ (1) Video monitor test”.

Tap “close menu” or press the key “**ENTER**” to close camera menu.

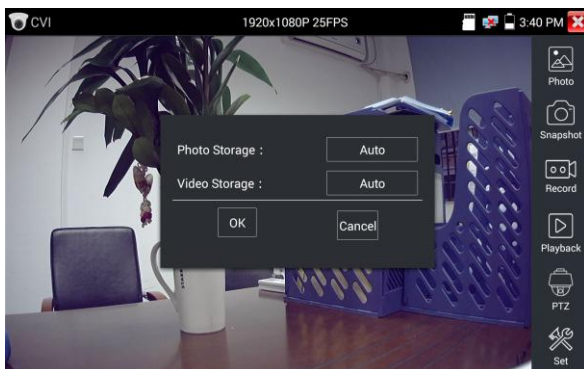


(4) Save setting


Click icon “Set” on the right toolbar to enter storage setting.

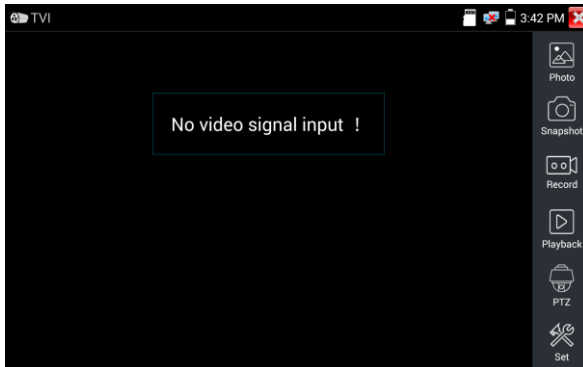
Support auto-storage and manual storage.

When select manual storage, user can name and store the files.



3.3.1 TVI camera test (*Optional)

HD TVI camera, TVI dome camera test and PTZ control, Click icon  to enter



When HD TVI signal input, the tester will display the image resolution on the top bar. Double-taps on the screen to make the image displayed full screen.

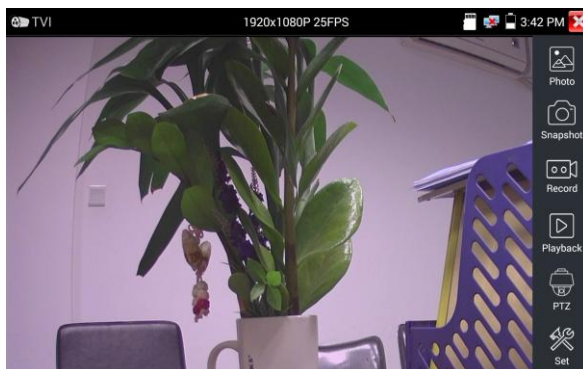
The tester supports resolution as follows:

1280x720P 25FPS / 1280x720P30FPS / 1280x720P 50FPS / 1280x720P 60FPS

1920x1080P 25FPS / 1920x1080P 30FPS / 1920x1080P 50FPS / 1920x1080P 60FPS /2048x1536P

18FPS/2048x1536P 25FPS/2048x1536P 30FPS /2560x1440P 15 FPS/2560x1440P 25 FPS/2560x1440P


30 FPS/2688x1520P 15FPS/2592x1944P 12.5FPS/2592x1944P 20FPS/ 3840 x 2160 15 FPS



Coaxial camera menu settings

Tap icon “UTC”, select “menu setting” to enter the dome camera menu.



Input calling dome camera menu address code, after finishing the parameter settings, you can press the key **ENTER** or click the icon  to call the dome camera menu.



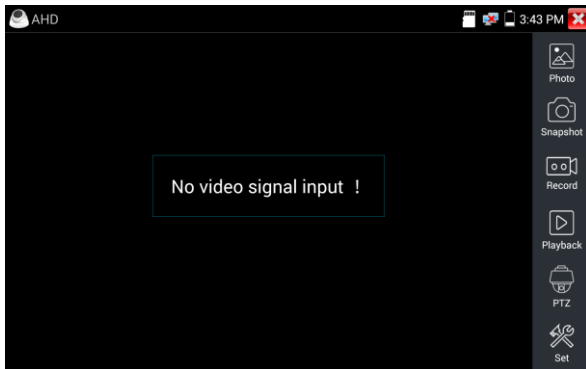
More operation instructions (such as PTZ control, coaxial camera menu setting ,snapshot, recording and playback etc), please refer to “3.3.6 CVI camera test”.

3.3.2 AHD camera test (*Optional)

AHD camera, AHD dome camera test and PTZ control, Click icon



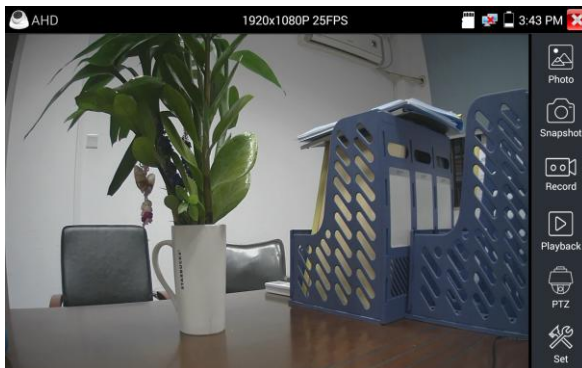
to enter



When AHD signal input, the tester will display the image resolution on the top bar. Double-taps on the screen to make the image displayed full screen.

The tester supports resolution as follows:

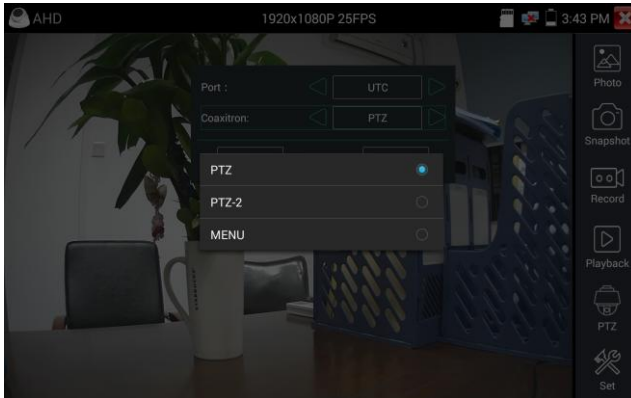
1280x720P 25FPS / 1280x720P 30FPS / 1920x1080P 25FPS / 1920x1080P 30FPS/2048x1536P
18FPS/2048x1536P 25FPS/2048x1536P 30FPS /2560x1440P 15 FPS/2560x1440P 25 FPS/
2560x1440P 30 FPS/2592x1944P 12.5FPS/2592x1944P 20FPS



(1) Coaxial PTZ control

UTC control : select "PTZ control or PTZ control-2"(AHD camera has two different order ,if select

“PTZ” cannot control , pls go “PTZ-2”)




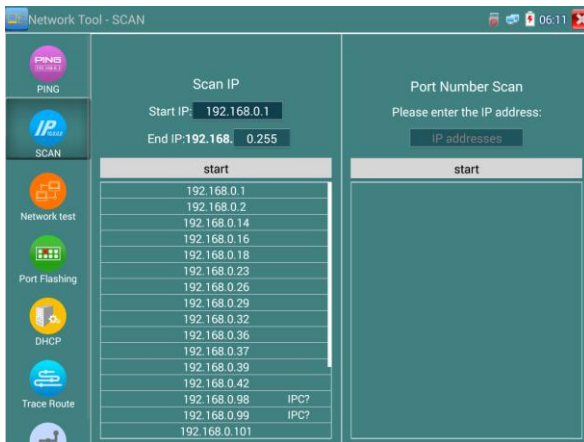
If to coaxial PTZ control the AHD camera, no parameters setting is needed.

More operation instructions please refer to “3.3.14 CVI camera test”


3.3.3 Network tool

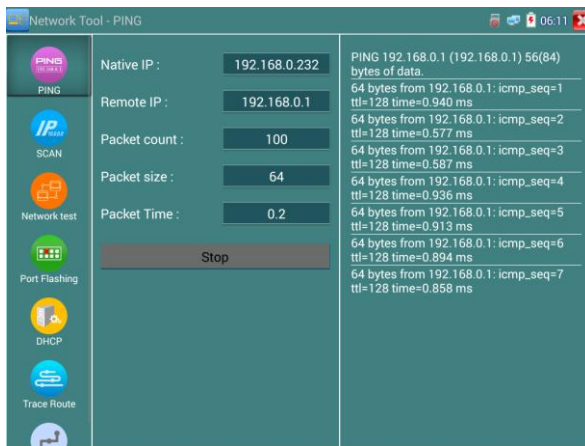
(1) IP address scan

Connect the cable to the LAN port, click icon  to enter, Set your IP address search range by changing the Start and End IP addresses. Click the “Start” button to scan the IP address range. You can also input an IP address in the Port Number Scan to scan for open ports.



(2) PING Test


Connect a network cable to the LAN port and click the  icon to open the PING tool. You can set your LOCAL (native) IP address, Remote IP address (e.g. IP camera), Packet count, Packet Size, Packet time and Timeout. Press “Start” to start pinging. If the IP camera or network device is not configured properly or not plugged in, it will say “Destination host unreachable” or have 100% packet loss. If the tester connects to the device, the send and receive packets will have a 0% packet loss.

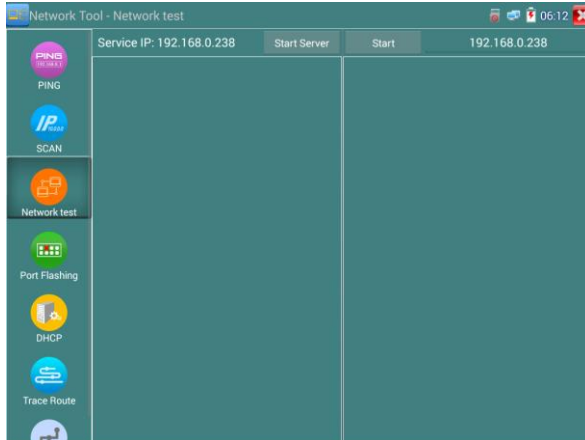


Application: PING testing is the most conventional network debugging tools. It is used for testing if the connected IP camera or other network equipment’s Ethernet port is working normally and the IP address is correct.

It’s normal that the first data packet will be lost when test start.

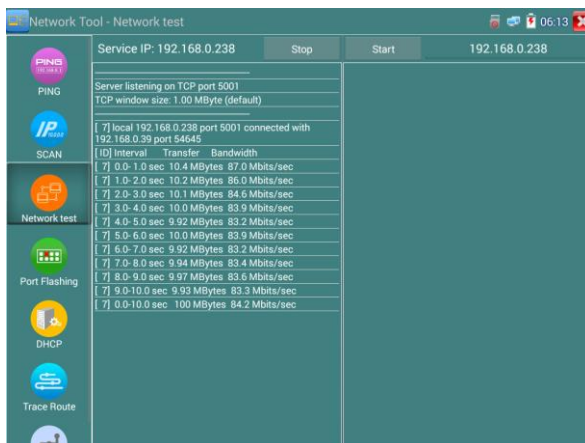
(3) Network test (Ethernet bandwidth test)

To use the Network tester, you will need two IP testers. One is used as a Server and the other as a Client. Both devices must be on the same network segment in order to communicate. Click the  icon to open the Network Tester app.



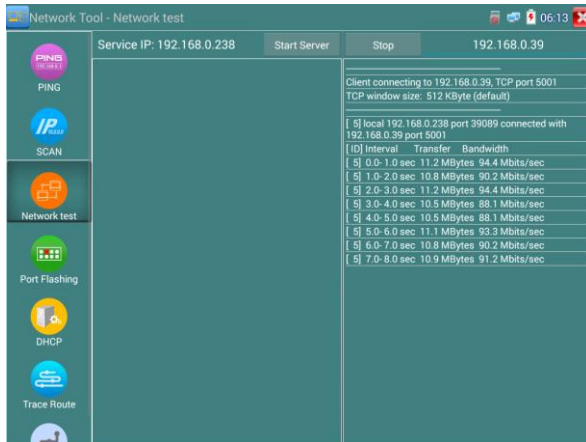
When test, need a tester or a computer installed Network Test Software as the Server, the other tester sends packet test. The two testers must be in the same network segment.

a). **Start the server:** Click “Start Server” button to use the tester as a Server. It will display its IP address at the top of the screen.

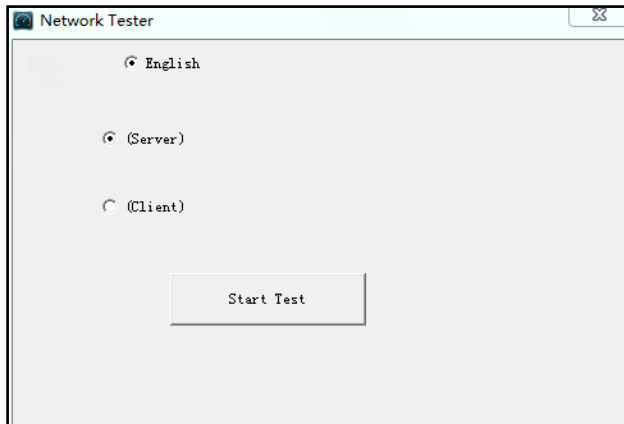


b). **Start send packet test:** Using the other IP tester, type in the Server's IP address at the top right corner of the screen. This app is used to send packets for network speed testing. Click the “Start” button

to send the packets and start testing.

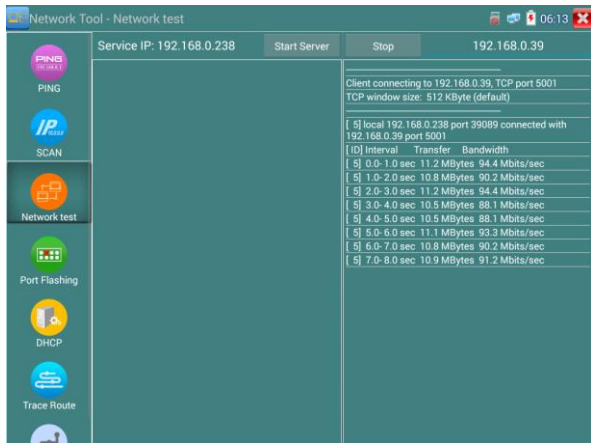


Network bandwidth testing can also be tested with a computer using compatible network bandwidth testing software. Install network bandwidth testing software on a computer, as a test Client or Server, to do the mutual testing with the tester. If use computer as the server, the computer IP address is:192.168.0.39

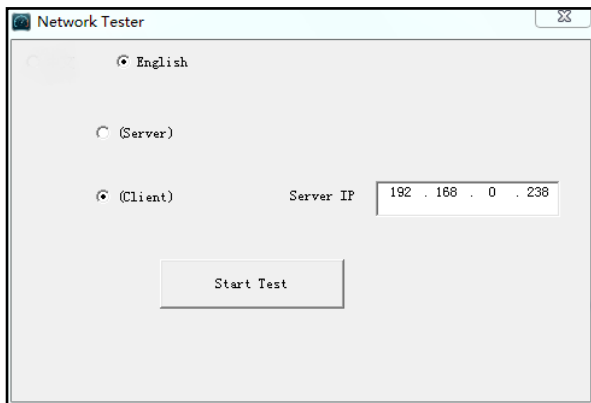


Tester as Client, tester's IP address is:192.168.0.238. The Server and the Client are at the same network segment, but with different IP address. Input Server's IP address 192.168.0.39 in the tester and click

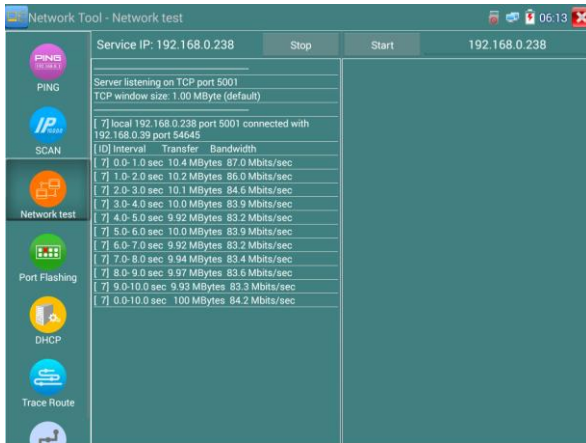
“Start” to test network bandwidth.




Or use tester as a Server, computer as test Client (select Client, input tester's IP address to test

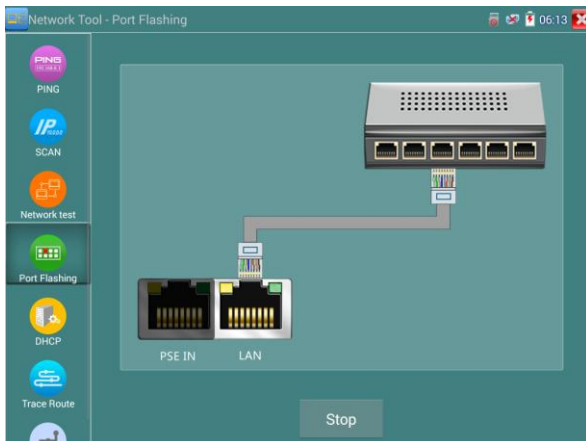


When use tester as Server,shows results:

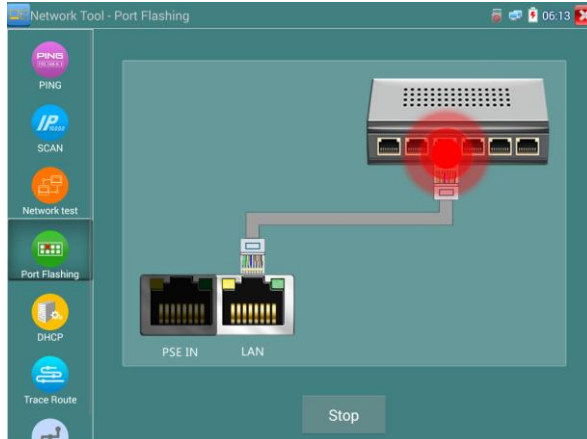


(4) Port Flashing

Connect a network cable to the meter's "LAN port", click the icon  to open the Port Flashing app. Click "Start". The IP tester sends a unique signal to make the connected LAN port of the switch flash.



If the tester and PoE switch are connected well, the LAN port of POE switch flash at special frequency, If not, no any changes on the LAN port.

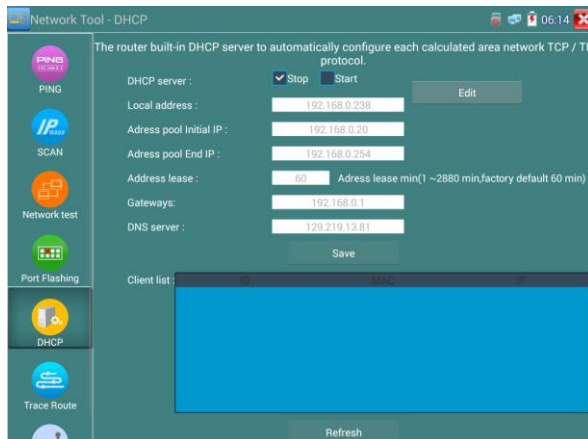


Application:

The tester will send special signals to make the connected LAN port flicker at special frequency, which will enable the installers to easily and quickly find the connected Ethernet cable. This function can prevent mistakenly insertion or disconnection non-corresponding cable to artificially interrupt network connection

(5) DHCP server


Click on the DHCP icon to open the DHCP server app. Select the “Start” check box at the top and make any desired changes to the network settings. Click “Save” to start assigning dynamic IP addresses for IP cameras and other networked devices. Click the “Refresh” button to check your Client list.



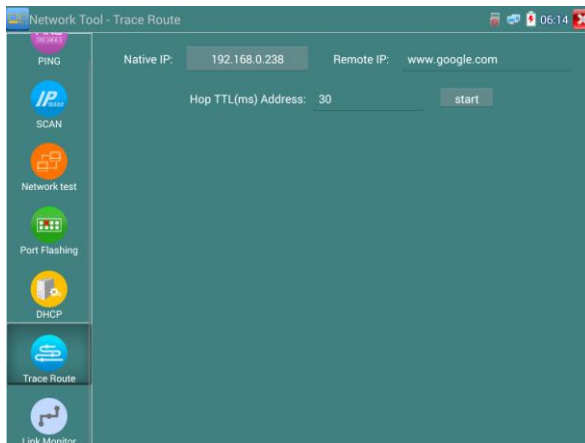
(6) Trace route

It is used to determine path of the IP packet access target.


Note: Trace route testing results only for reference, for accurate test route tracking, Pls use professional Ethernet tester.

Click  to enter trace route. Input tracking IP address or domain name in the Remote Host IP. Set maximum hop count, normally default is 30.

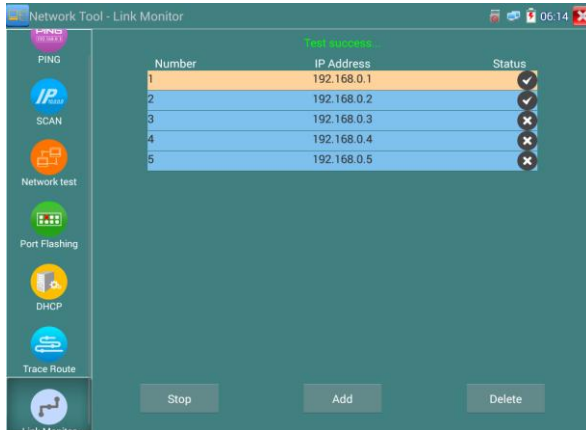
Click “Start” to trace the goal address.



(7) Link monitor

Click the  icon to open the Link Monitor app. This app is used to see if an IP address is occupied by other network devices. This will avoid new address conflicts.

Click “Add ” and enter the desired IP address. To test different network segments, click the “Settings” icon on the main menu and go to IP Settings and make the desired changes. Once the desired IP addresses are added to the Link Monitor list, click “Start”. If the IP address status shows a check mark the IP address is occupied. If the IP address status shows an X the IP address is available. Click “Stop” to stop the testing.



Application:

Add an IP camera or other network device to the current network group, the new IP address must not be occupied, otherwise it will cause IP conflicts and stop the equipment normal working. Link monitor can check if the new setting IP address is occupied.


3.3.4 Rapid IP Discovery

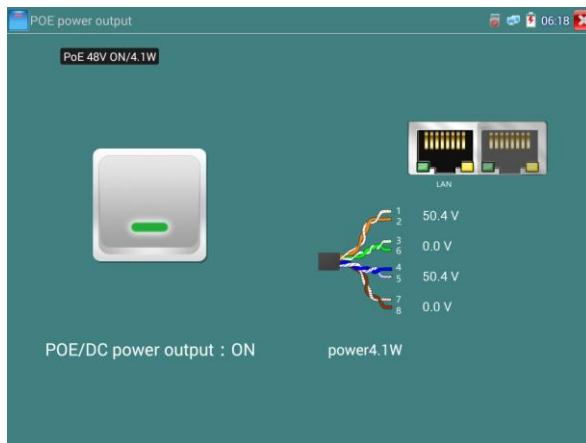
Connect the cable to tester's LAN port. Press  to enter Rapid IP Discovery app. Click "Start" to search all IP address of connected equipment in whole network segment. Click "Stop" to stop work.



3.3.5 PoE power / DC12V 3A and DC 5V 2A USB power output

When the tester is turned on, the DC 12V and DC 5V power output functions are automatically turned on. If the IP tester is turned off, the DC 5V USB can still be used to power an external USB device.

To use the PoE Power Output function, click on the icon  and change the switch “ON” or “OFF”. The IP camera needs to be connected to the LAN port before you turn PoE Power on. If the IP camera Supports PoE, the PoE power is delivered via pins 1, 2, 3, and 6 on the LAN port. The IP tester will display “48V ON” at the top of the screen when the POE power is still on.

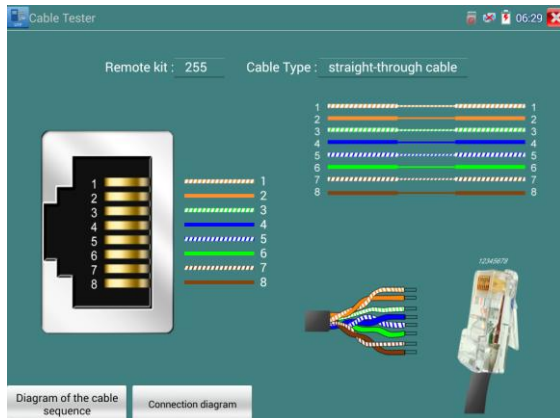


Note:

1. Don't input power into the “DC12/3A OUTPUT” port.
2. Don't output this DC12V/3A power to the DC12V/IN port of the IP camera tester to avoid destroy.
3. The IPC tester power output is close to 3A, if the IP camera's power is over 3A, the tester will auto enter protection mode. Disconnect all the connections of the tester and then connect the tester with power adaptor to resume the tester.
4. Before turning on the PoE power output, please make sure the IP camera supports PoE power. Otherwise it may damage the IP camera.
- 5 Make sure you plug in your IP camera to the LAN port prior to turning on PoE power.
6. Make sure the tester is full charged or more than 80% charged, otherwise the tester will shows “low power”, “not able to supply power”.

3.3.6 Cable Test

Click icon  to enter



Test LAN cable or telephone cable.

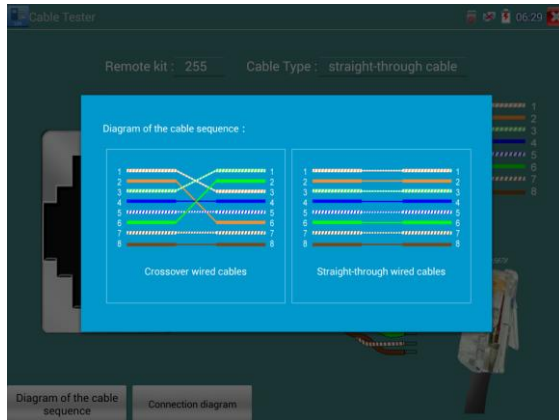
Connect LAN cable or telephone cable with the CCTV tester and cable tester. And then the connecting status, cable type and the sequence of wires as well as the serial number of the cable tester kit will be displayed.

The number of the cable tester is 255

If need several different number other types cable testers, should pay the additional cost.

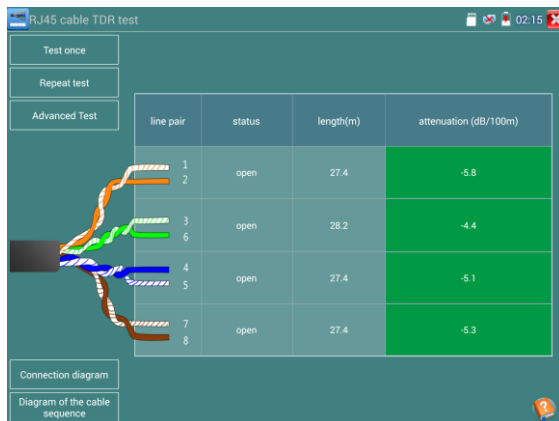
Cable test

Tap "cable test sketch map", pop up Straight-through cable and crossover cable sketch, It is for line sequence reference ,when the crystal on the first pressure in the twisted-pair.



3.3.7 RJ45 cable TDR test

Connect cable to tester's LAN port, click icon  to enter RJ45 cable TDR test app.



Test once: Test cable status, length and attenuation.

Repeat test: Continue to test cable status, length and attenuation.

Status: After link up, screen display “online”, if not link up or open circuit, screen display “open circuit”, if cable pair is short circuit, screen display “short circuit”.

Length: The max test length is 180 meters, when cable is open circuit or short circuit, can test the cable length, if screen display “online”, the testing result would be not accurate.

Cable quality test: Green is good quality cable, Yellow is Poor quality cable, Red is water poured cable, the attenuation value will be displayed when cable over 10 meters.



The screenshot shows the 'RJ45 cable TDR test' software interface. It features a control panel on the left with buttons for 'Test once', 'Repeat test', and 'Advanced Test'. Below these is a 'Connection diagram' and a 'Diagram of the cable sequence'. The main area contains a table with the following data:

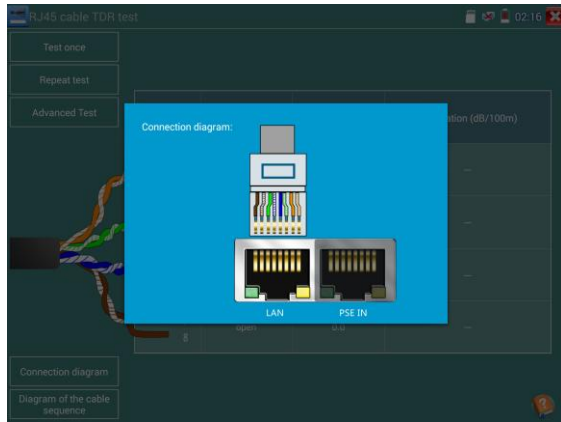
line pair	status	length(m)	attenuation (dB/100m)	reflectivity (%)	impedance(Ω)	skew(ns)
1 2	open	28.2	-5.2	—	—	invalidation
3 6	open	27.4	-4.9	—	—	invalidation
4 5	open	26.6	-5.5	—	—	invalidation
7 8	open	27.4	-5.3	—	—	invalidation

Advanced Test: Test cable pair status, length, attenuation, reflectivity, impedance, skew and other parameters.

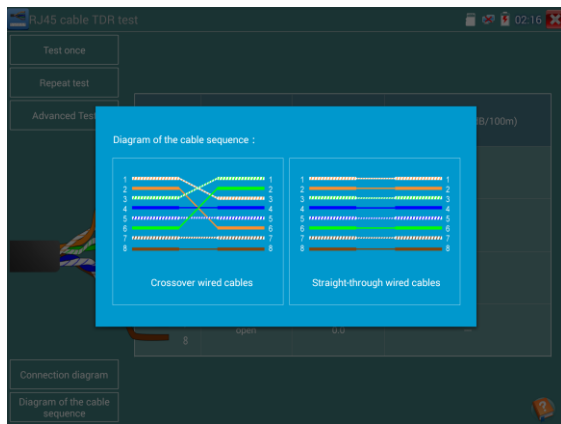
Attenuation reflectivity: After link up, if reflectivity value is 0, it is the best quality communication

Impedance: After link up ,if the impedance value is 100Ω ,it is the best quality communication, the range is generally in 85-135Ω .

Skew: After 1000M link up, when skew value is 0ns,it is the best quality communication, if over 50ns, will cause a Bit Error Rate in the transmission.

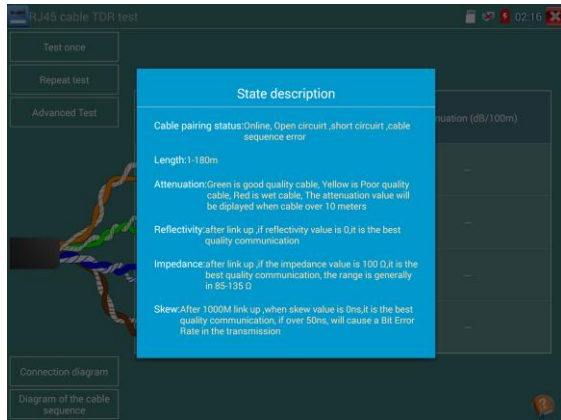


Connection diagram:



Cable sequence diagram:


A straight- through and cross-over cable diagram, the cable sequence display for reference.

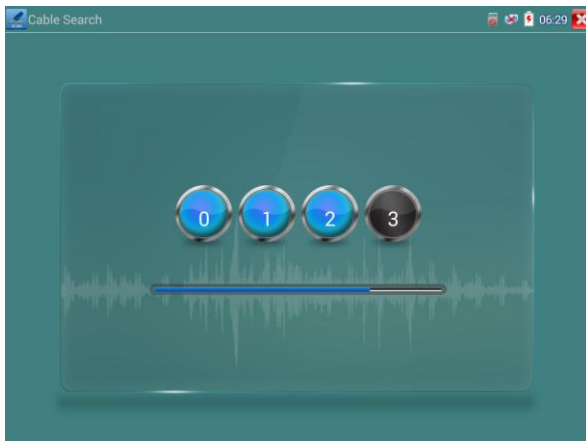


Click “Help”, check the instruction of all parameters.

3.3.8 Cable Tracer

Connect test cable or BNC cable to the UTP port or the CABLE SCAN (VIDEO OUT) port on the

bottom. Click icon  to enter, click the Number on the screen to adjust audio type.



Use the blue Combination cable identifier and network cable tester's copper pointer to touch all the cables in the bundle.

You are searching at the other end. The cable that gives off the loudest tone is the cable connected to the tester. Press the + or – buttons on your blue cable identifier to adjust the volume.



Note: Install two AAA batteries in your blue Cable Identifier.



Note: While the cable tracer is receiving the audio signal from the tester, it may be induced into adjacent or crossing cables, however, the cable that makes the loudest noise is the one that's connected to the meter.

Application

It's convenient for people to find out the other end of the cable from the messy cables in security maintenance and network engineering.

While searching BNC cable, connect one port of the alligator clips to the copper core or copper net of the BNC cable, the other one to connect the earth wire (barred windows).



Note: The battery of the cable tracer must according to corresponding positive pole + and negative pole -, otherwise will damage the tester.




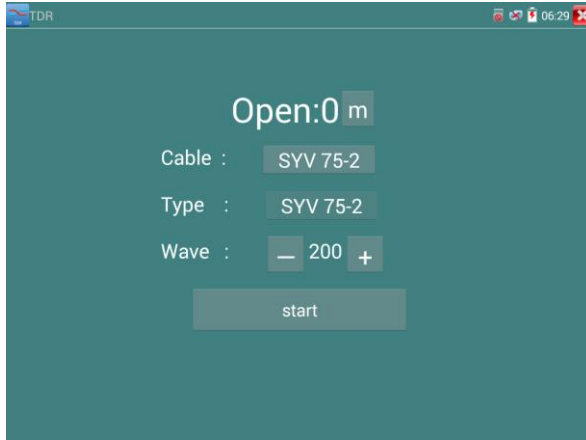
Note: While the cable tracer tester is receiving the audio signal from the tester, it may be influenced by other signals and make some noise.

3.3.9 TDR cable test (*Optional)



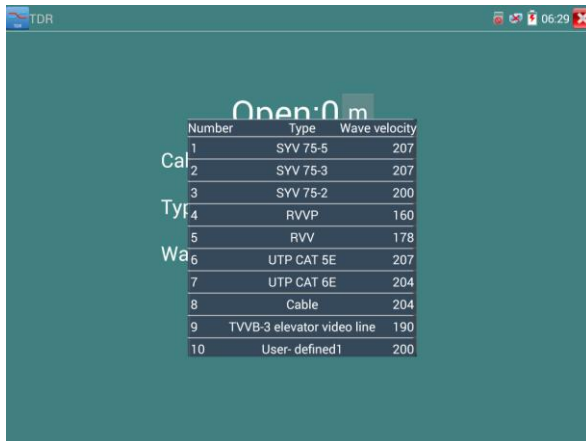
Note: The testing cable can't be connected to any equipment, otherwise it will damage the tester!

Connect Alligator clip cable to the TDR port, and the cable must connect well before testing, otherwise it will influence the accuracy. Click  to enter, and click "Start" to test

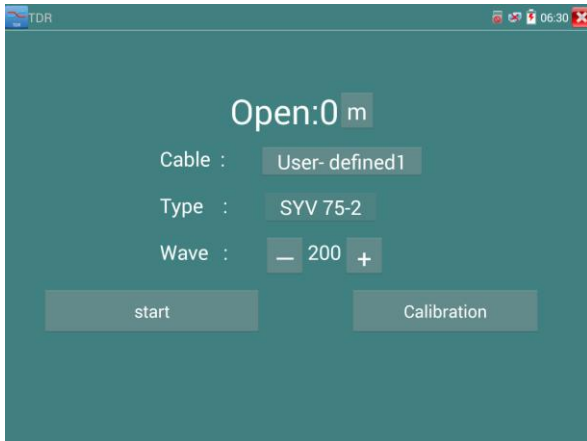


Built-in BNC cable, network cable, RVV control cable, Telephone line and TVVB cable etc can test, 11 groups user-defined cable can be set.

Click “Cable” “Type” to select cable and start testing. One tap on “Start” do one testing. If select built in cable type for testing, click “+” and “-” to adjust cable’s wave speed.

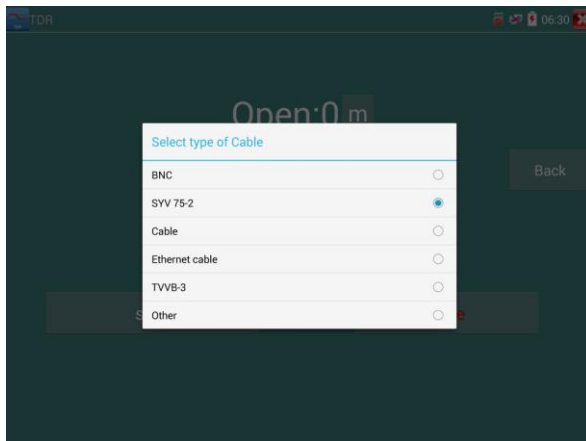


User-defined calibration: Choose the cable 100 meters to 200 meters (more than 50 meters), click “Cable”, “Type” to select user-defined 1 for calibration, 11 groups user-defined can be set.

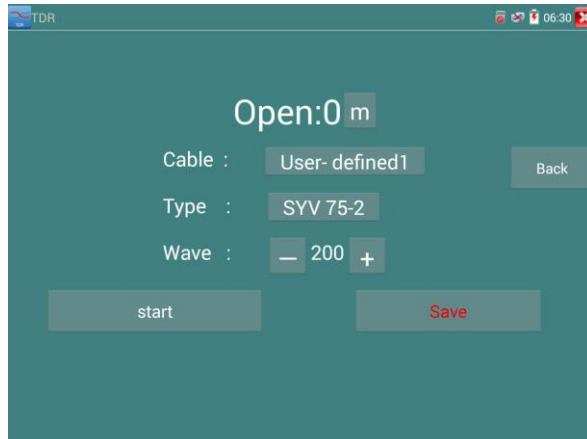


1. Select user-defined and click “Calibration” to enter test , click “user-defined 1” can define cable name, such as: AiPu BNC-5

2. Click “Cable” , “Type” to select cable, and corresponding type, for example, if testing BNC cable, select “BNC”, if testing communication cable 75-2, select SYV 75-2.



3. Click “+” or “-” to adjust wave speed ,while display length is the same with the actual Length ,click “Save” to save calibration data. It can be used for the same cable testing next time.



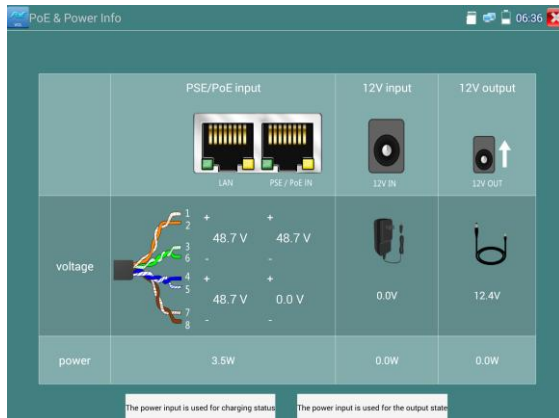
Application: TDR test is used for pulse reflection method, to transmit pulse signal for tested cable, when cable is open circuit or short-circuit, reflected pulse is generated, the tester receives and deals with the reflected wave, measurement results displayed on the screen. TDR can test cable open circuit and short circuit, help engineer quickly find the cable’s problem location. It is more convenient and efficient to repair the faulty cable.



Note: The TDR reflect signal could be affected by the cable quality/ cable’s not well connected etc to cause the different TDR measurement, the TDR measurement is for reference only.

3.3.10 PoE Voltage test

Click icon  to enter PoE voltage measurement



Connect a network cable from a PoE switch to the IP tester's PSE IN port. Connect an IP camera or other PoE using node to IP tester's LAN port, the PoE voltage and the cable's pin connection status show on the screen.



Note: This test is for measuring the voltage being drawn by the PoE node and the IP tester must be between the PoE switch and the PoE node for this test to work.

Note: The PoE switch must be connected to the PSE IN port. The powered device such as IP camera or other PoE node must be connected to the LAN port.



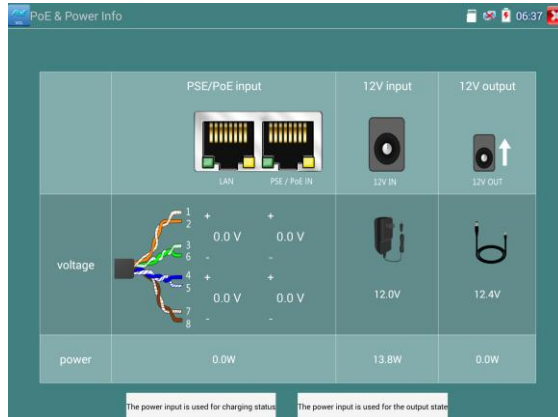
Note: Do not connect PoE power supply equipment (such as a PoE switch) to the tester's UTP/SCAN port, otherwise it will damage the tester.

PSE transmission

When PoE / PSE voltage testing, PoE/PSE connect to the tester's PSE "IN" port, the camera connect to tester's Lan port, tester not only can transmit voltage to supply power for camera, but also transmit data at the same time, as well as the computer connect to the PoE/PSE, it can log in connected tester's PoE camera.

3.3.11 12V power input test

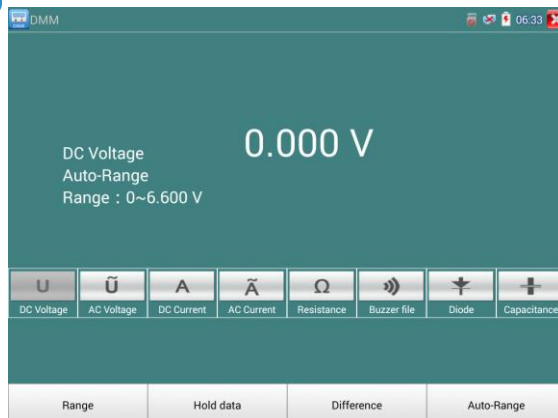
Connect 12V power adaptor to tester's charging port, then click icon "PoE" to enter voltage measurement app, screen show the current adaptor input voltage and power. Note: the current 12V input measured power is the battery charging power and the device working power, the measured power will change depending on the different of battery power and backlight brightness.



Warning: Not allow connect device with input power over 17V to tester "12V IN" port, otherwise it will damage the machine.

3.3.12 Digital Multi-meter (*Optional)

Click icon  to enter



1) SYMBOLS:

- U:DC Voltage Measuring A:DC Current Measuring
- Ω :Resistance Measuring ∇ :Diode Testing
- \tilde{U} :AC Voltage Measuring \tilde{A} :AC Current Measuring
- $\rangle\rangle$:Continuity Testing $\text{||} \perp$:Capacitance Measuring

AC/DC	Voltage and current measurement state display
Auto- range	The Multimeter auto adjust the range by input signal or tested components
Data hold	Hold data
Relative measurement	Display the relative measurement value Press the key to change display state
10A socket	In 10A current measurement state ,indicate use 10A socket
Over range	The current measurement value over the range, if in the Auto range state, to switch Auto.

2) OPERATING INSTRUCTION

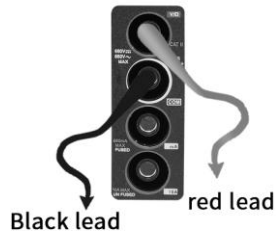
A. DC Voltage Measuring

WARNING!

You can't input the voltage which more than 660V DC, it's possible to show higher voltage, but it's may destroy the inner circuit.

Pay attention not to get an electric shock when measuring high voltage.

- a. Connect the black test lead to the "COM" jack and the red test lead to the "V/ Ω " jack.
- b. Select U, enter the DC voltage measurement.
- c. the tester default Auto range status ,by click "DC auto range" ,



press the

key can select manual range and restore auto range .

Manual range: 0.000V → 6.600V range

00.00V → 66.00V range

000.0V → 660.0V range

000.0mV → 660.0mV rang

B. AC Voltage Measuring

WARNING!

You can't input the voltage which more than 660V AC, it's possible to show higher voltage, but it's may destroy the inner circuit.

Pay attention not to get an electric shock when measuring high voltage.

a. Connect the black test lead to the "COM" jack and the red test lead to the "V/Ω" jack.

b. select U ~ , enter the AC voltage measurement.

C.the tester default Auto range status, by click "AC auto range"

d. Manual range can be select , press the key "NEAR" to restore Auto range.

e. Manual range: 0.000V → 6.600V range

00.00V → 66.00V range

000.0V → 660.0V range

000.0mV → 660.0mV range

C. DC Current Measuring (only manual range)

WARNING!

Shut down the power of the tested circuit, and then connect the meter with the circuit for measurement.

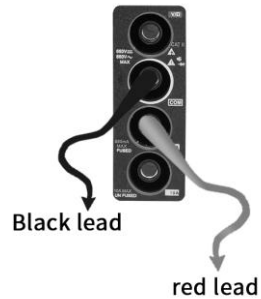
a. Connect the black test lead to the "COM " jack and the red test lead to the "mA" jack for a maximum of 660mA current. For a maximum of 10A, move the red lead to the 10A jack.

b. select **A**, enter the DC current measurement, the screen display “DC current”, can select manual range:

- c. Manual range: 0.000mA → 6.6mA range
 00.00mA → 66.00mA range
 000.0mA → 660.0mA range
 00.00A → 10.00A range (use 10A

socket)

d. Select the range to enter current measurement



⚠ NOTE:

- ◆ When only the figure “OL” is displayed, it indicates over range situation and the higher range has to be selected.
- ◆ When the value scale to be measured is unknown beforehand, set the range selector at the highest position.
- ◆ The maximum current of mA socket is 660mA, over-current will destroy the fuse, and will damage the meter.
- ◆ The maximum current of 10A socket is 10A, over-current will destroy the meter, and will damage the operator.

D. AC Current Measuring (Only Manual range)

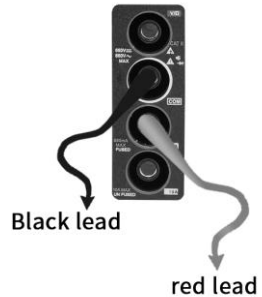
WARNING!

Shut down the power of the tested circuit, and then connect the meter with the circuit for measurement.

a. Connect the black test lead to the “COM” jack and the red test lead to the “mA” jack for a maximum of 660mA current. For a maximum of 10A, move the red lead to the 10A jack.

b. select \tilde{A} , enter the AC current measurement, manually select the range

- c. Manual range: 0.000mA → 6.600mA range
- 00.00mA → 66.00mA range
- 000.0mA → 660.0mA range
- 00.00A → 10.00A range (use 10A socket)



⚠️ Note:

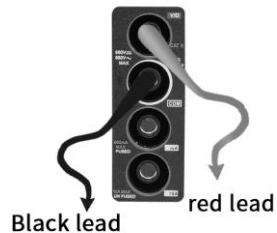
- ◆ When only the figure “OL” is displayed, it indicates over range situation and the higher range has to be selected.
- ◆ When the value scale to be measured is unknown beforehand, set the range selector at the highest position.
- ◆ The maximum current of mA socket is 660mA; over-current will destroy the fuse, and will damage the meter.
- ◆ The maximum current of 10A socket is 10A, over-current will destroy the meter, and will damage the operator.
- ◆ In “ AC ” mode, only can input “AC”, if not, will damage the meter.

E. Resistance Measuring

WARNING!

When measuring in-circuit resistance, be sure the circuit under test has all power removed and that all capacitors have discharged fully.

- a. Connect the black test lead to the “COM ” jack and the red test lead to the “V/Ω” jack.
 - b. to select Ω, enter the Ω measurement
- the tester default Auto range status, Press the key manually select



range ,Press “NEAR” to restore “Auto range”

Manual range:(Connect the red lead to black leads, will display the measure range)

000.0Ω → 660Ω range

0.000 KΩ → 6.600KΩ range

00.00 KΩ → 66.00KΩ range

000.0 KΩ → 660.0KΩ range

0.000 MΩ → 6.600MΩ range

00.00 MΩ → 66.00MΩ range

F. Continuity Testing

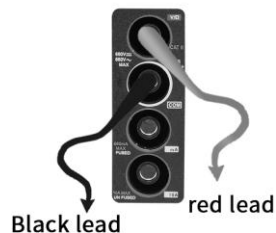
WARNING!

When testing the circuit continuity, be sure that the power of the circuit has been shut down and all capacitors have been discharged fully.

a. Connect the black test lead to the “COM” jack and the red test lead to the “V/Ω” jack.

b.to select ⌋ , enter the continuity test, Connect test leads across two point of the circuit under testing.

c. If continuity exists (i.e., resistance less than about 50Ω), built-in buzzer will sound.



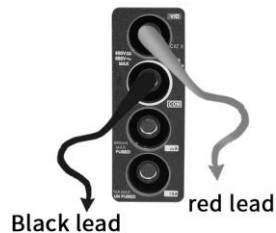
G. Diode Testing

WARNING!

The capacitance of a capacitor should be tested separately, should not test in the installation of circuit.

a. Connect the black test lead to the “COM” jack and the red test lead to the “V/Ω” jack. (the red lead anode “+”)

b. to select ⌋ , enter the diode testing.



- c. Connect test red lead across to the anode, the black lead to the cathode of the diode under testing.
- d. Connect test red lead across to the cathode, the black lead to the anode of the diode under testing.
- e. Tested diode, forward voltage low 30mv, there is sound indication, then can finish the testing quickly without view the screen.

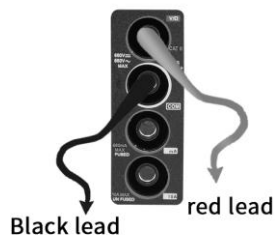
H. Capacitance Measuring

WARNING!

To avoid electric shock, be sure the capacitors have been discharged fully before measuring the capacitance of a capacitor.

- a. Connect the black test lead to the“ COM ” jack and the red test lead to the “V/ Ω ” jack.
- b. Select “ C ” to enter, enter the capacitance measurement.
- c. The tester default auto range status, and manual range by press upward and downward key, Auto rang by press the key “NEAR”

Manual range: 0.000nF	→	6.600nF	range
00.00nF	→	66.00nF	range
000.0nF	→	660.0nF	range
0.000uF	→	6.600uF	range
00.00uF	→	66.00uF	range
000.0uF	→	660.0uF	range
0.000mF	→	6.600mF	range
00.00mF	→	66.00mF	range



- d. Before connect test leads across two sides of the capacitor under measurement, be sure that the capacitor has been discharged fully.



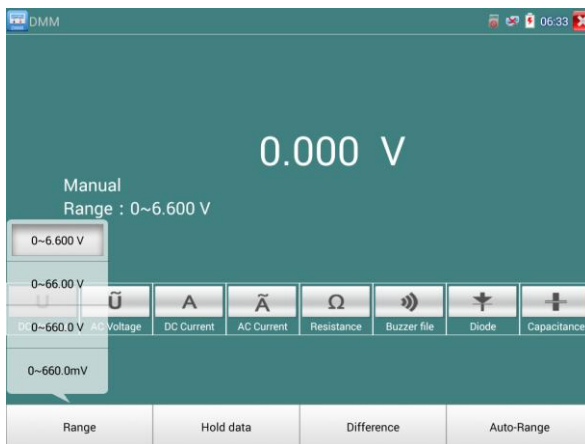
Note:

- a. The capacitance of a capacitor should be tested separately, should not test in the installation of circuit.

- b. To avoid electric shock, be sure the capacitors have been discharged fully before measuring the capacitance of a capacitor.
- c. While testing the capacitance of a capacitor to 660uF, the Max time will be 6.6 seconds, if the capacitor is leaked or damaged, the data can't be read. The tester will be normal after disconnecting the capacitor.

Manual range and Auto range

When testing, click “Range select” to change the value, click “Auto range” to enter Auto measurement.



Data hold

Click “Hold data” to enter, the data be hold, the value is green. Press it again to quit.

Relative value measurement

Click “Relative” to enter, the tester Auto-save the data, the displayed new measurement and relative value is red color. Press it again to quit.

The hold function and the relative value be combined use, the display value is yellow.

The meter protection

➤ **Voltage protection**

You can't input the voltage which more than 660V AC, it's possible to show higher voltage, but

it's may destroy the inner circuit.

➤ **Resistance, Continuity, Diode, PTC component Protection**

Wrong input voltage, will Auto enter protection state , It only suitable for short and limit time work.

If input voltage over 600V, will damage the meter.

➤ **mA current fuse range: 250V 1A**


if the current over the rated range ,fuse will melt to protect the meter .Pls use the same model when change the fuse, Pls opens the battery cover to change.



Note: 10A socket without fuse protection, if over the current range.

Wrong using the 10A socket to measure the voltage, will damage the meter.

3.3.13 Optical power meter (*Optional)

Click icon  to enter ,with five wavelength 1625nm,1550nm, 1490nm, 1310nm ,1300nm, 850nm, linear or nonlinear optical power display, both for optical power testing and Fiber link loss relative measurement. It is necessary tool for installation and maintenance optical fiber communication, cable television and CCTV security system.



Note: Please keep the fiber connector and the dust cap be clean, and clean the detector with the special alcohol.

Data hold

While testing, click “Hold” to data hold, the data will not change. It's convenient to read. Press again to quit.

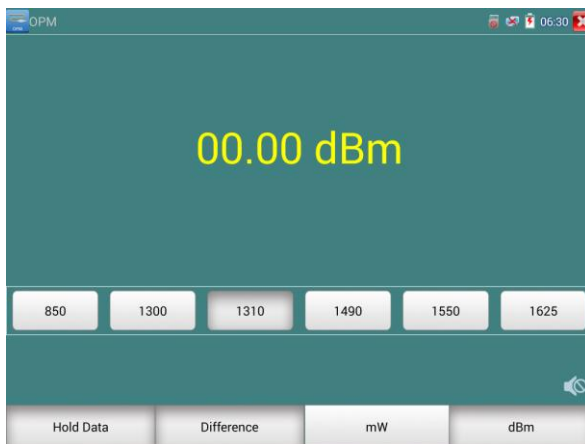


Relative power value (optical link loss) measurement

While testing, set the wavelength for measurement. Click "relative"(difference) to test, the tester Auto save current fiber power value as the base reference value. Input another optical fiber to be measured, the displayed new measurement and relative value is red color. Press it again to quit.

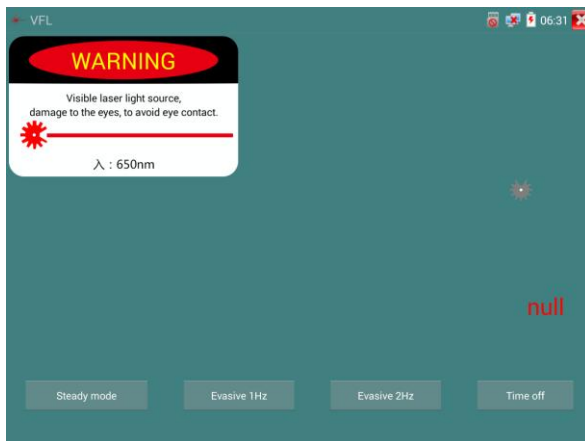


Data hold and Relative measuring use together, the data is yellow while the function is effect.



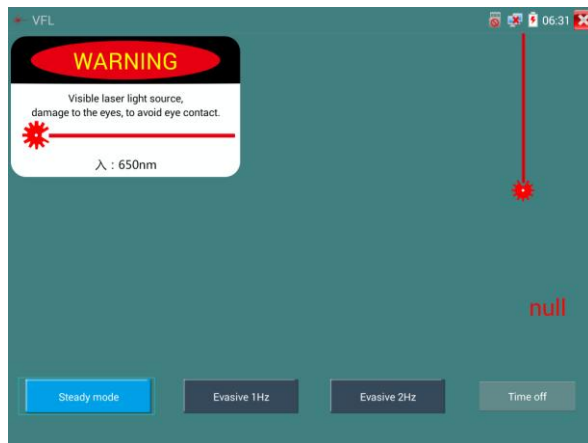
3.3.14 Visual Fault Locator (*Optional)

Click icon  to enter

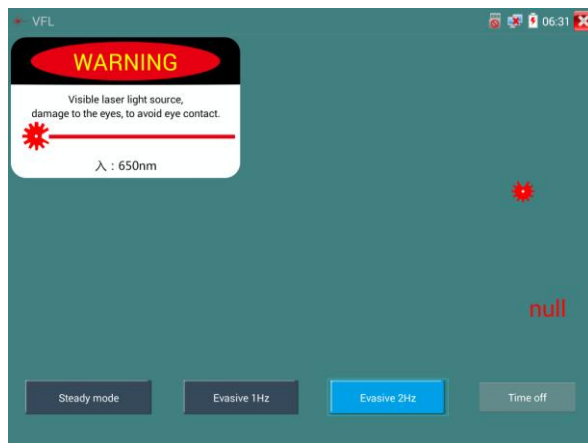


VFL four status can select——“Steady mode”, “Evasive 1Hz”, “Evasive 2Hz”and “ Time off ”. Click button “Steady mode” to enter steady status, click button “Evasive 1Hz” and “Evasive 2Hz”, to enter pulse mode, click button “ Time off ”, VFL is turned off. Timed turn off can select (5 mins, 10 mins, 30

mins, 60 mins and 120 mins).




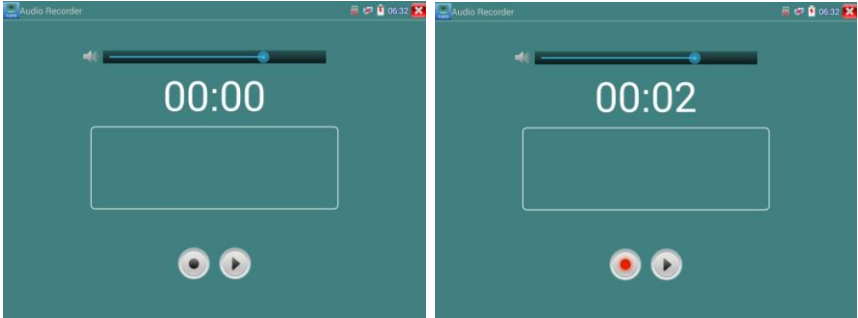
Click "Steady mode", red laser source emits steady, click again to quit.



Click icons "Evasive 1Hz" or "Evasive 2Hz" to enter pulse mode, the red laser source is emitted by a certain frequency, press it again to quit.

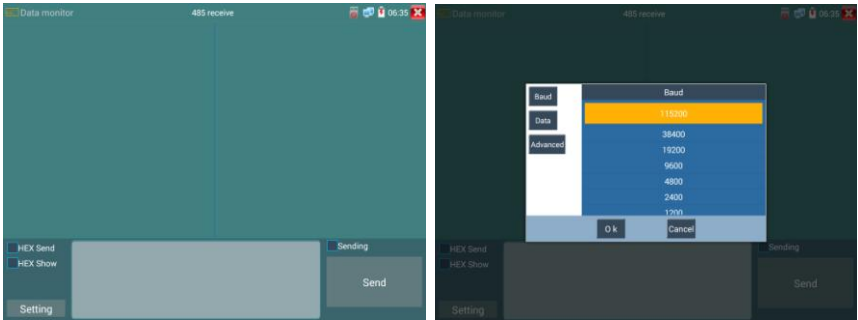
3.3.15 Audio Record

Connect an audio device to the IP tester's audio input port. Click the  icon to enter the Audio Recorder app. Click the red button to stop, and the unit will prompt you to save the recording.



3.3.16 Data monitor

Pls click icon  to enter



Click "Setting" to choose the baud rate of RS485, it must be the same as the DVR or the Control.

Keyboard. The DVR or Control keyboard send the code to the tester, if it can be read, the protocol will be shown on the upper right, like Pelco D, if not, like P:---


Though the RS485 port, display the PTZ control code of the multifunctional keyboard or the DVR.

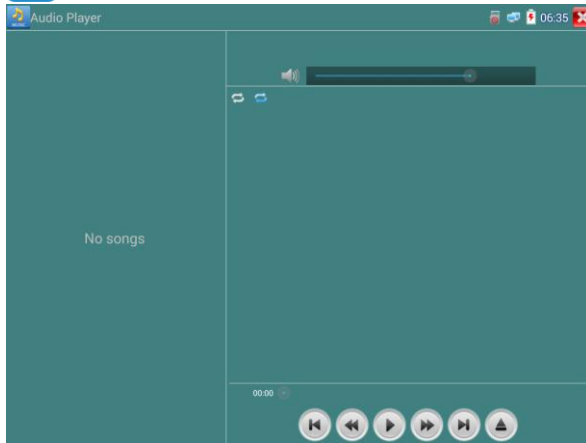
Controller can check the status of the RS485 transmission through the code on the display. (The RS485 communication rate must be the same.)

Application: Check the RS485 communication states of the video optical transmitter whether normal.

Engineer can analyze the protocol and check the data through the displayed code.

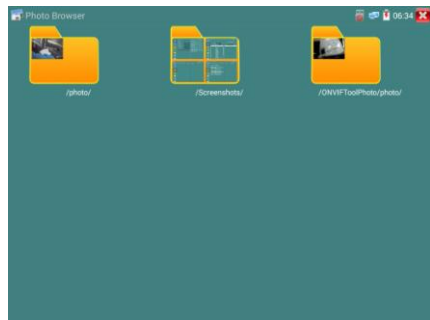
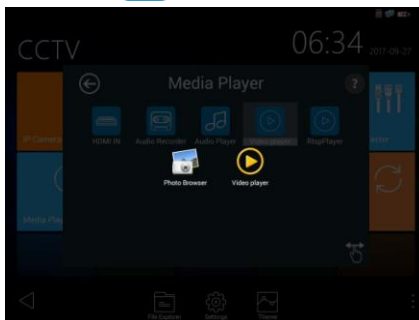
3.3.17 Audio player

Click the icon  to enter. The audio player only supports MP3 format Audio files.



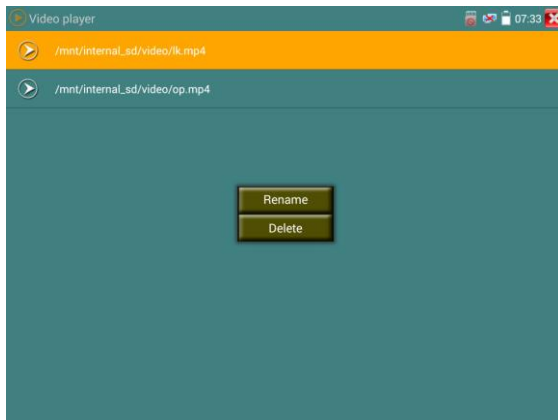
3.3.18 Media Player

Click the icon  to enter



The Media player can browse video and image files. It supports the video formats of MP4, H.264, MPEG4 and MKV. The IP tester recorded files can play directly via the Media player. The Media player will automatically display the video files from the SD card. Click on the desired file to play. Click RETURN to exit.

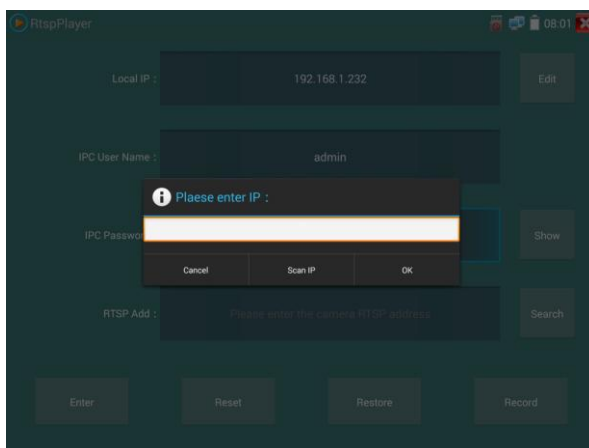
To rename or delete an existing file, press the file name for a few seconds until the screen below appears. You can then rename or delete the file by pressing the desired option.



3.3.19 RTSP Player

The RTSP Player app will allow you to view the RTSP video stream from an IP camera. If you were unable to view your camera via the ONVIF or IPC Test apps, it is possible your camera will have an RTSP stream and you can view live video.

From the main menu, select the "APP Tool" folder and then select the "RTSP Player" to open the app. If the IP camera uses MJPEG, select the RTSP icon. If the IP camera uses H.264, select the "RTSP HD" icon.



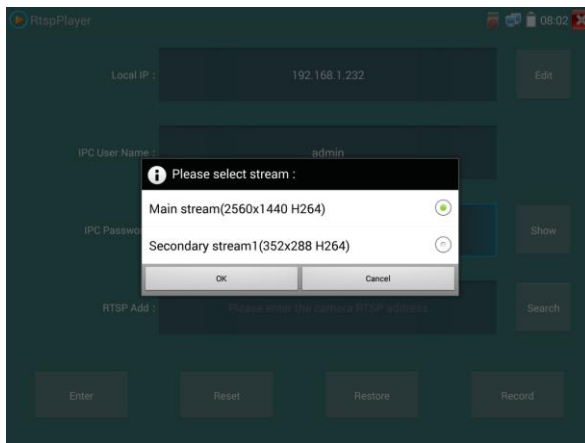
Local IP: This is the IP testers IP address.

RTSP Add: This is where you can manually enter the IP camera's RTSP URL or click on Search to search the network for cameras that use an RTSP stream.

IPC Username: Enter the IP camera's user name.

IPC Password: Enter the IP camera's password.

Once you have entered all the necessary information, select Enter at the bottom left to view the RTSP stream.



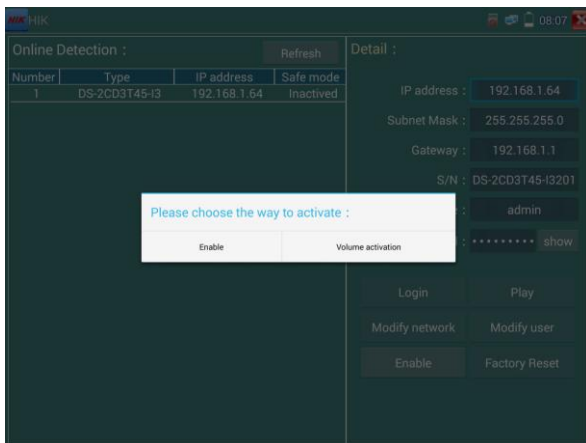
Note: In the event the ip tester does not auto detect the rtsp stream, refer to the specific camera manufacturer for the specific rtsp stream url. you may find this on line with a search of the camera model number and the word rtsp.

3.3.20 Hik test tool

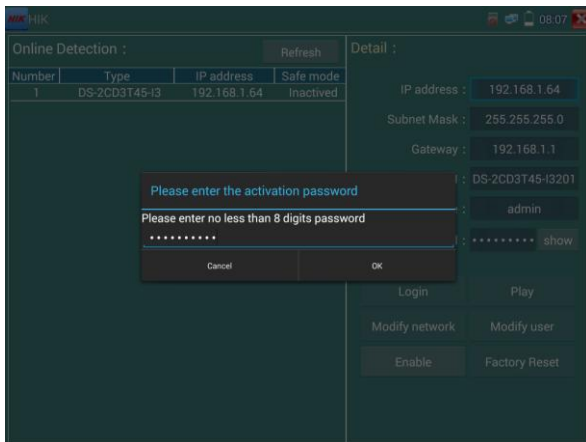
Hik test tool app is designed for activating and debugging Hikvision camera, can auto-identify unactivated hikvision camera, also can display image from the Hikvision camera.

Tap icon  to enter

1. Hikvision activation: When connect the unactivated Hikvision camera to the tester, it will auto identify and display “Unactivate” at safety mode. Select needed activate the camera, click bottom right corner button “Enable”, pop-up “the camera have not been activated, activated now”?

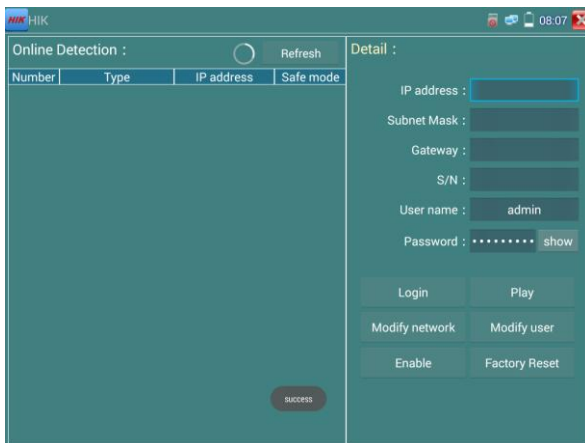


2. Input password: Input new password, tap “ok” to activate.



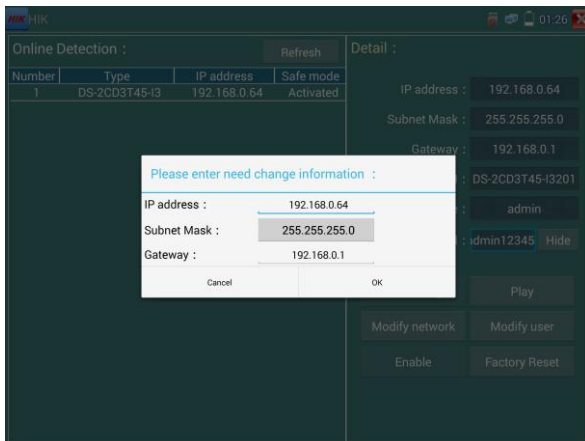
3. Confirm activation

After activating the camera, the program default modifies the camera IP. Activated multiple cameras in the local area Network, and pop-up menu to modify IP, improve project efficiency.

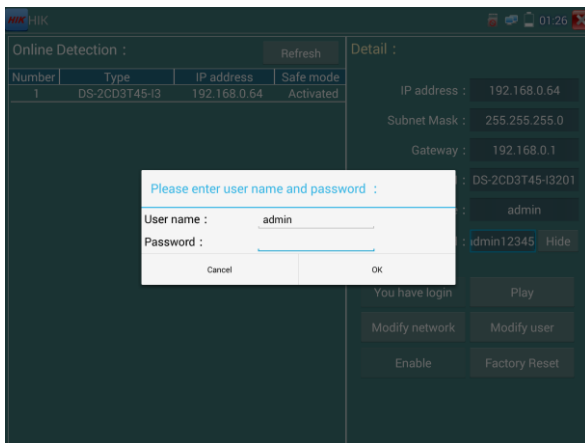


Play: Display image from the camera.

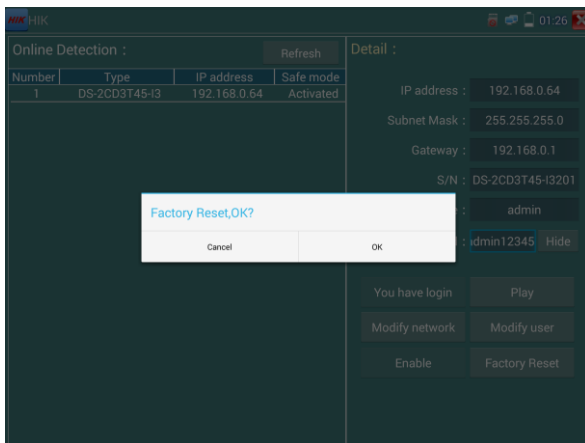
Modify network information: Change the camera IP address, sub-net mask and gateway etc.



Modify user information: Modify the camera's user name and password.



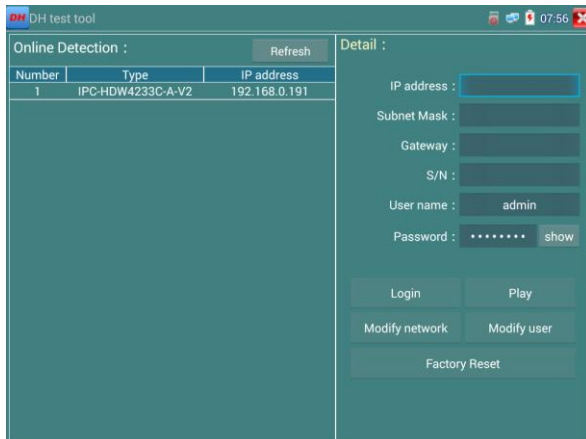
Factory Reset: Camera factory reset



3.3.21 Dahua test tool

Dahua test tool is developed for installation and debugging of the Dahua IP camera, it can display image, modify IP, user name and password etc. Making Dahua camera test more convenient and quickly.

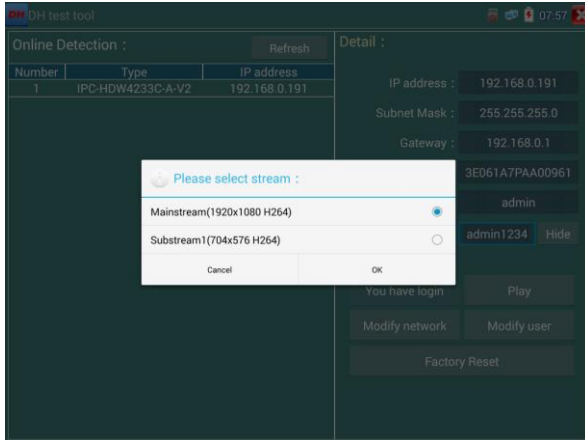
Click “DH” icon  to enter Dahua test tool.



Select the camera of the online detection menu, if the camera support non-verification login, you can click “play” directly, and view the image.

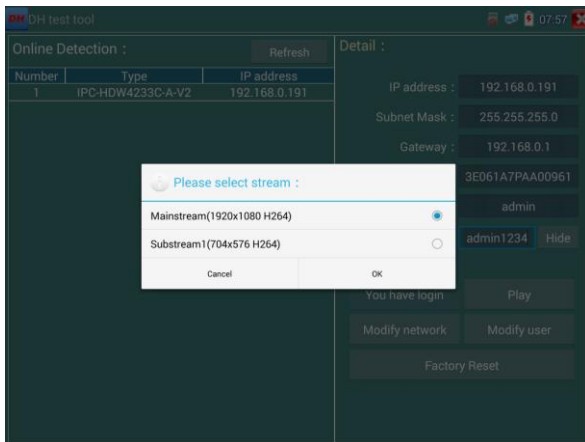


Pop up stream menu, select Mainstream or Substream to test.

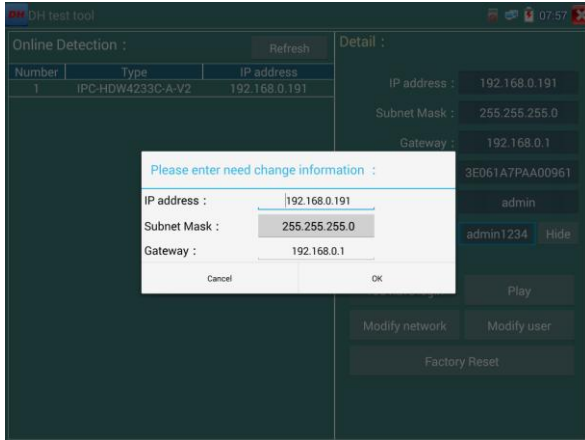


If the camera not supports non-verification login, pls select “camera” of online detection menu, and input correct user name and password, then click “log in”. After logging successful, you can test it.

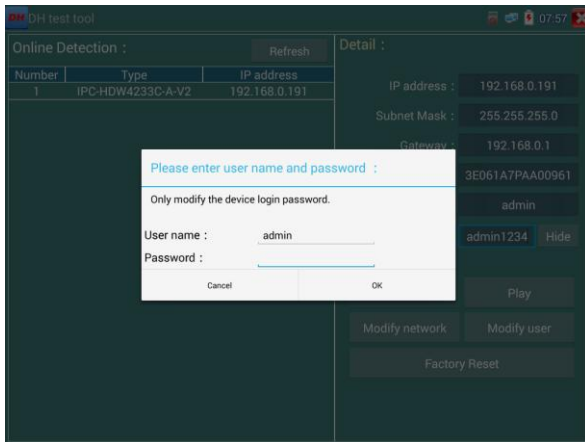
Play: Select Mainstream or Substream, IP camera live video display.



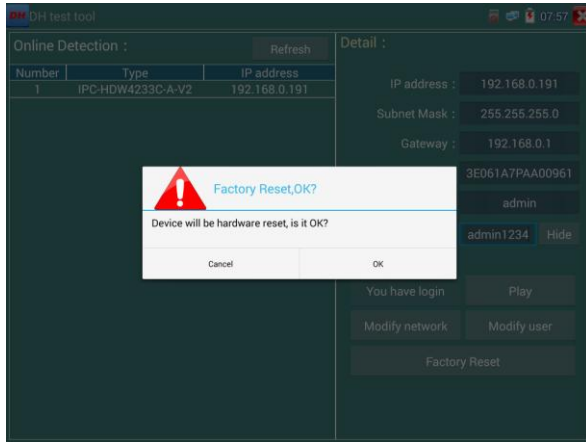
Modify network information: Modify camera parameter, such as ip address, subnet mask, gateway etc.



Modify user information: Modify camera user name and password, which is onvif, Dahua test tool, IPC TESTE user name and password, not web user name and password.




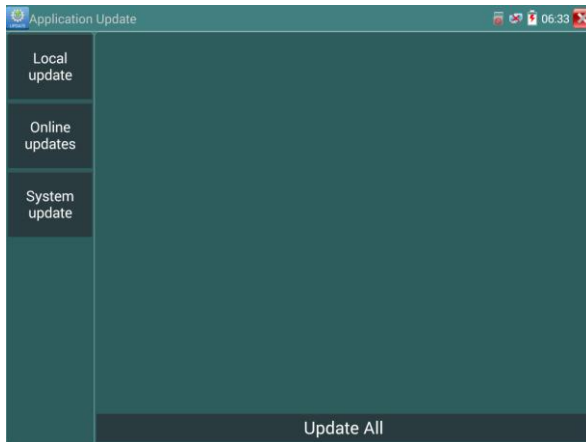
Factory reset setting: Camera will be soft reset, and the device's user name, password and network set be saved. Other settings information is factory reset.



3.3.22 Update

Copy the downloaded update file to SD card "update" directory, if no directory, please create one.

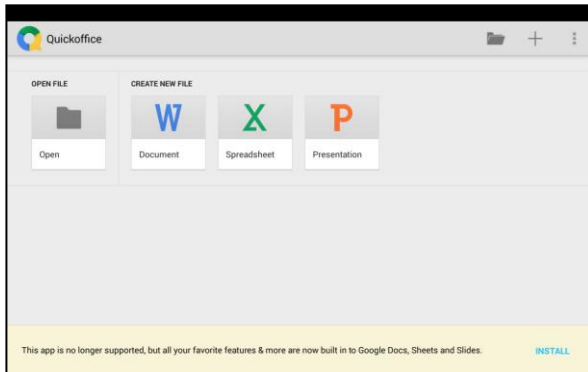
Click the  icon to open the Update menu. Select "Local Update" to update via the SD card or select "Online Update" to check for updates on the internet.




If there are update programs, applications will be listed in the interface, click related applications, update to the latest version.

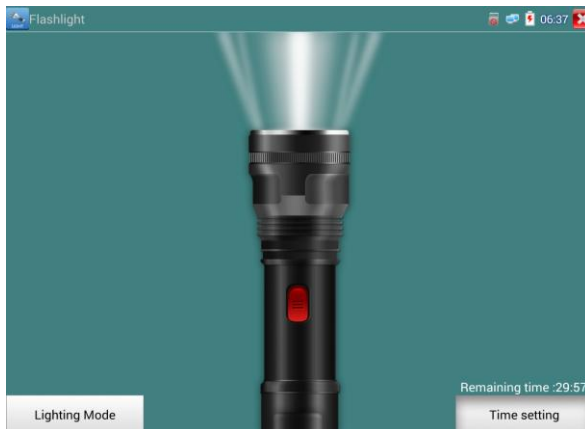
3.3.23 Office


Quick office app (support excel, word, ppt format) doc. editable



3.3.24 LED Flashlight

It is convenient for the installation or maintenance in the evening or in the dark. Click icon  to enter.



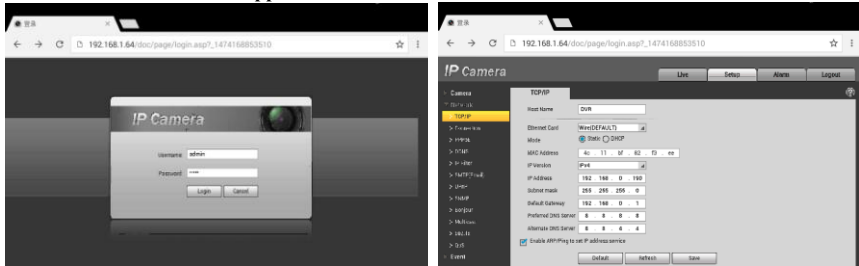
While in the flashlight app, click the red button to turn on the LED lamp. Press it again to turn it off. If you don't press the red button  to shut off the lamp and press the button to exit the app, the lamp will stay on. Click the Time Setting button to set a timer that will shut off the lamp.


3.3.25 Browser

Click icon  to enter

Type in the camera's IP address and press "Go" to access the IP camera's interface.

NOTE: You will not be able to view live video in the web browser. For viewing video, use the IP tester's live camera view Apps.

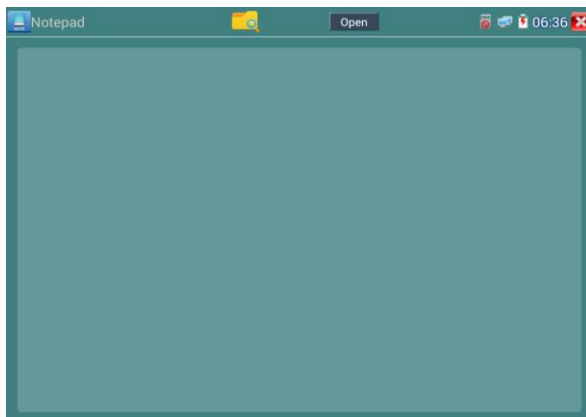



The IP camera and IP tester be on the same network segment for the browser to interface with the camera. If they are not in the same segment, click the button  or press "RETRUN" to exit. Open the "Settings" app from the main menu to change the IP tester's network settings to match those of the IP camera.

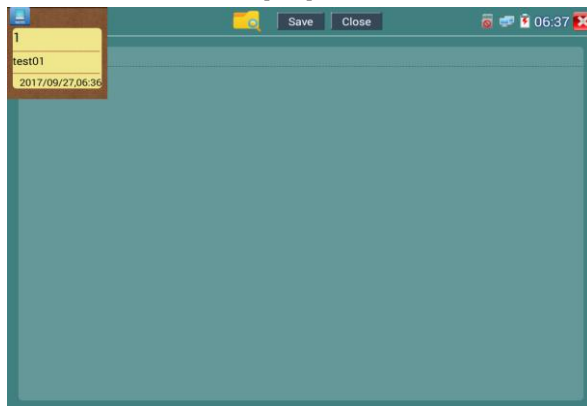
3.3.26 Notepad

Notepad can be used to record the important testing results, click the key "Save" to save the contents.

Notepad can auto record the storage date and time.



pls click  to view the notepad , all saving contents display. Click each record bar to show the details. Press the record bar for several seconds, prompt whether delete it.



3.3.27 System Setting

Click icon  to enter

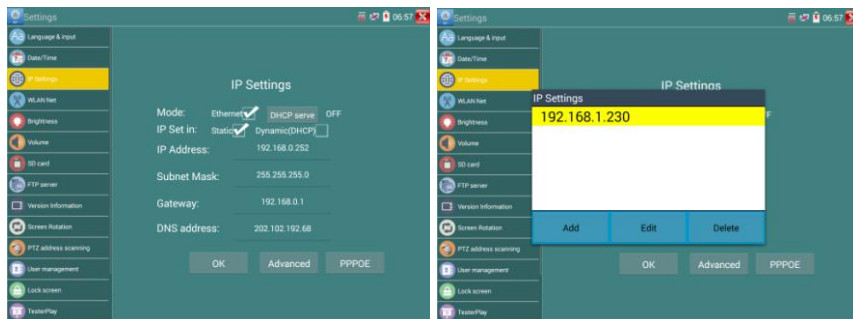


Language: Select your desired language: English, Chinese, Korean, Russian, Italian, Polish, **Spanish**, **French** or **Japanese**.

Typewriting: You can select typewriting or install other typewriting:

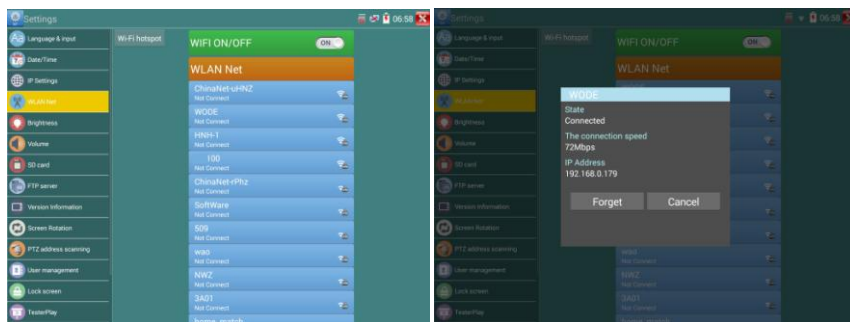
Date/Time: Set the Date/time of the IP tester.

IP setting: Manually set the IP address, Sub-net Mask, Default Gateway and DNS address or select “Dynamic allocation” to use DHCP. To test multiple network segments, click “Advanced ” and then click “Add ” to enter another IP address for the IP tester.

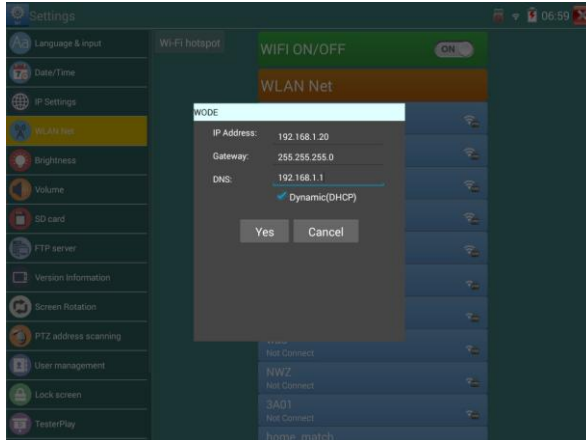


After setting an advanced IP address (refer to the photos above), the unit can test two network segments (192.168.5.0) and (192.168.1.0).

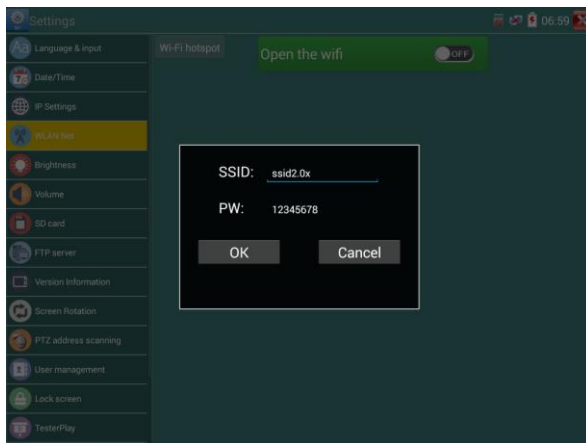
WLAN Net: Turn WiFi off or on by pressing the “Open the wifi” button. Once WiFi is turned on, **and click connected WIFI**, it will scan for wireless networks in your area.



Select and press “WIFI” several seconds, to set static IP address.



Wi-Fi hotspot: Input “SSID” name and “password”, and then click “ok” to create Wi-Fi hotspot.



Brightness: Set the desired brightness of the IP tester and adjust the sleep time settings.

Volume: Set volume level.

SD Card: Displays SD Card Capacity. You can also format the SD card or unmount it before removing it.

FTP server: Once the IP tester connects to a network, a computer can be used to read the SD card files via FTP.

Lock Screen: The meter default is not locked. You can choose password Lock screen, pattern Lock screen or “NO”.

Password Lock Screen: Set password, you can input digitals, letters or characters as password, input it again to confirm .when the meter is in standby mode or turn it on, you can input your password to enter.

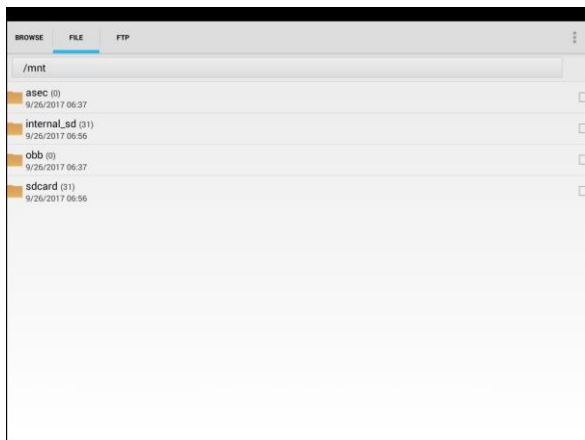
Pattern Lock Screen: Drawing a pattern to lock. While the meter is in standby mode or turn it on, you can input your pattern to enter.

Modify Lock screen password, you need input lock password again. Select password Lock screen or pattern Lock screen to reset lock screen password. After reset pattern lock screen, you need to draw a new lock pattern.

Restore the factory settings: If the tester to restore factory settings, all your personal files and apps will be removed.

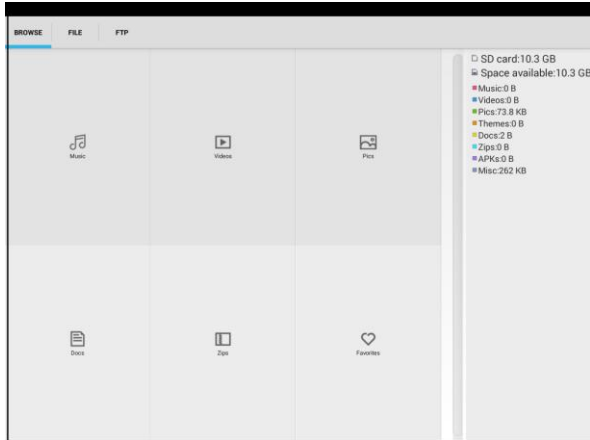
3.3.28 File explorer

Click “File” on the top bar tool, can select internal or external storage. Click on the upper right corner Icon “...” will pop-up menu, you can select other operation or exit.



Browse

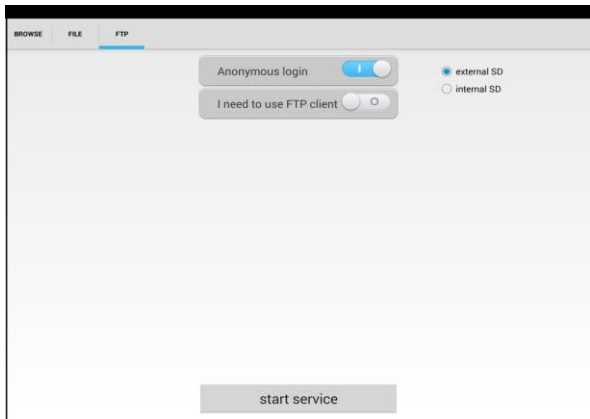
It includes Music, Videos, Pictures, Documents, zip file etc. It is convenient to view and manager.



FTP server

You can choose internal or external SD card.

Other operation details, Pls refer to FTP settings.



3.3.29 Theme

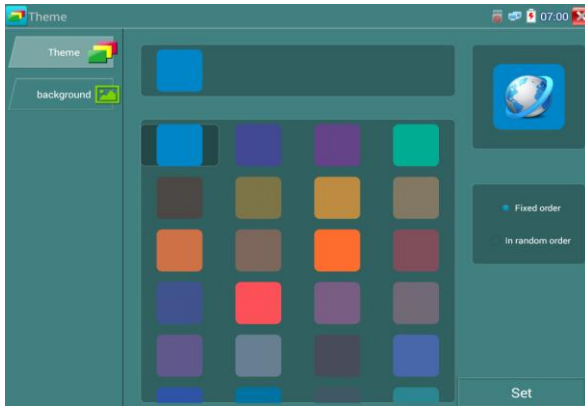
Click Theme icon to enter themes setting.

Desktop style : You can select Lite mode or normal mode.

Theme:

Pressing square area's any color icon several seconds, the selected color icon will be auto move the rectangle area, if you press selected color several seconds, and it will be auto deleted.

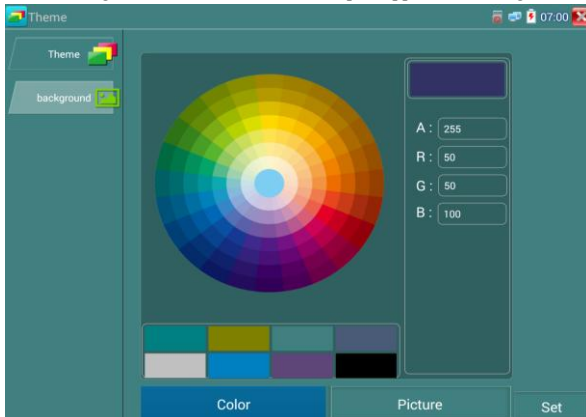
Theme colors include fixed order and random order, and click "set" to save.

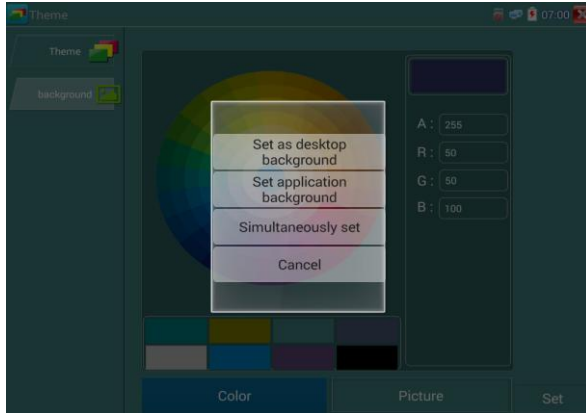


Color

When set background color, you can select colors from Color Phase, and also can input color's RGB to set.

After finished color setting, click "set" to set it as desktop or application background.





Set as desktop background: Setting color as desktop background.

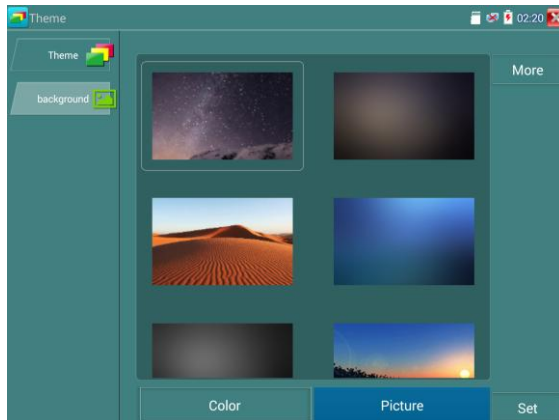
Set as application background: Set color as application background.

Set at the same time: Setting color as desktop background and application background.

Cancel: Cancel current setting.

Picture:

Click Picture to select one, and set as temporarily background to view setting effect. Click “more” to select pictures from local file, and click set to set picture as background.



3.4 Audio test

You can test the audio input from audio pickup devices by connecting the audio pickup device to the IP tester with the supplied audio cable.



3.5 HDMI output

The built in HDMI output port can output live video from an analog or IP camera, recorded files, media files and images to HDTV monitors. Connect an HDMI cable from the IP tester to an HDTV monitor at any time. It supports up to 1080P resolution.

3.6 PoE power output

The IP tester supports PoE (Power over Ethernet) output to an IP camera via the LAN port. Data transmission and 48VDC use the network cable's 1, 2, 3, and 6 pins to deliver power. If the IP camera supports PoE, you can directly connect to the camera without the use of an external power supply.



- a. Please make sure the cable connected to the tester's Lan port is straight-line cable and has no short circuit, otherwise will damage the tester
- b. Before using PoE power output, pls check the IP camera whether supports POE powered,otherwise it will damage the IP camera.



c. The instrument's PoE maximum power output is 24W. If Ultra- high-power load happens, the tester will enter protection mode .

3.7 DC12V 3A power output

When the IPC tester is turned on, the DC 12V power output ON by default. The smaller end of the supplied converter cable connects to the tester's DC12V/3A OUTPUT and the other end connects to the camera's power input.



Application

Power output function is mainly used in the camera field demonstration and testing, meanwhile, for some cameras installation sites, If there is no power outlet for the adapter to power the camera, the tester can offer temporary power for it. But we do not suggest tester supply power for a long time.



Notice:

- a. Don't input any power into the "DC12/2A OUTPUT" port of the tester.
- b. Man-made damage is not within our company's warranty.
- c. The IP tester's power output capacity is 2A. If the IP camera uses more than 2A, the tester will automatically enter a protection mode.
The IPC tester power output is close to 2A, if the IP camera's power is over 2V, the tester will auto enter protection mode. Disconnect all the connections of the tester and then connect the tester with power adaptor to resume the tester.
- e. Make sure the tester has a sufficient charge, otherwise tester can't provide enough output power.

3.8 USB 5V 2A power output

When the tester is turned on, the DC 12V and DC 5V power output functions are automatically turned on. If the IP tester is turned off, the DC 5V USB can still be used to power an external USB device.

NOTE: The USB port is for power only and not data.



4. Specifications

4.1 General Specifications

Model	IP Camera Tester 【*】 models Optional
Display	New 8 inch retina touch screen cctv tester , 2048*1536 resolution
Network port	10/100M/1000M auto adjust, RJ45
WIFI	Built in WIFI,speeds 150M, allows you to connect to a wireless network and view IP cameras
H.265 Mainstream test	New hardware decoding,4K,H.265/H.264 camera image display by mainstream testing
RJ45 cable TDR test	RJ45 cable TDR test and cable quality test, to test cable pair status, length, attenuation reflectivity, impedance, skew and other parameters
HDMI IN	Support 720×480p /720×576p /1280×720p /1920×1080p /1024×768p/1280×1024p /1280×900p /1440×900p
HDMI output	1 channel HDMI output, supports up to 3840*2160p
IP discovery	Auto-scan the whole network segment camera IP
Rapid ONVIF	Search camera quickly, auto log in and display image from the camera, activate Hikvision camera
Hik test tool	Activate Hikvision camera, display image from the camera, modify IP, user name and password parameters etc
DH test tool	Dahua camera test, modify IP, user name and password parameters etc
IP camera type	ONVIF,ONVIF PTZ, Dahua IPC-HFW2100P, Hikvision DS-2CD864-E13, Samsung SNZ-5200, Tiandy TD-NC9200S2, Kodak IPC120L, Honeywell HICC-2300T, RTSP Viewer
HD/EX-SDI video signal test * * (Optional)	1 channel HD-SDI/EX-SDI input (BNC interface, resolution support: 720p 60fps / 1080p 60fps /1080i 60fps

<p>CVI video signal test * (Optional)</p>	<p>1 channel CVI input (BNC interface, resolution support 8MP CVI camera test, 3840x2160 12.5/15 fps, 2560x1440p 25/30fps, 1920x1080p 25/30fps , 1280x720p 25/30/50/60fps, UTC control and call OSD menu</p>
<p>TVI video signal test (Optional)</p>	<p>1 channel TVI input (BNC interfce) ,resolution support 8MP TVI camera test , 3840x2160 15 fps, 2592x1944p 12.5/20fps, 2688x1520p 15fps , 2560x1440p 15/25/30fps, 2048x1536p 18/25/30fps , 1920x1080p 25/30fps , 1280x720p 25/30/50/60fps , UTC control and call OSD menu</p>
<p>AHD video signal test * (Optional)</p>	<p>1 channel AHD input(BNC interfce),resolution support 5MP AHD camera test 2592x1944p 12.5/20fps, 2560x1440p 15/25/30fps, 2048x1536p 18/25/30fps , 1920x1080p 25/30fps , 1280x720p 25/30/50/60fps , UTC control and call OSD menu</p>
<p>Analog video test</p>	<p>1 channel BNC Input & 1 channel BNC Output, NTSC/PAL (Auto adapt)</p>
<p>Video level meter</p>	<p>PEAK video signal level, SYNC signal level, COLOR BURST chroma level measurement for cvbs camera.</p>
<p>Zoom Image</p>	<p>Supports Analog and IP camera image zooming & movement</p>

Snapshot, Video record and playback	Capture current images and record live video as JPG file. Media player will view photos and playback video
12V/3A power output	Output DC12V/3A power to camera
USB 5V power output	5V 2A power output only, NO data
PoE power output	48V PoE power output, Max power 24W
Screen management	Lite mode and normal model are available. Under normal mode, you can change icons sequence and self-define the number of icons in each page
Theme	Self-define icons, desktop and application interface background, modify interface sliding effect
Drop-down menu	PoE power switch, IP setting, WLAN switch, HDMI IN functions etc screen lock, password lock screen or pattern lock
Audio test	1 channel audio signal input and 1 channel audio signal output to connect headphones
PTZ control	Support RS485 control, Baud 600-115200bps, Compatible with more than 30 protocols such as PELCO-D/P, Samsung, Panasonic, Lilin, Yaan, etc
Color bar generator	Output one channel PAL/NTSC color bar video signal for testing monitor or video cable.(red, green ,blue, white and black color)
UTP Cable tester	Test UTP cable connection status and display on the screen. Read the number on the screen
Data monitor	Captures and analyzes the command data from controlling device, also can send hexadecimal
Network test	IP address scan, link scan, and Ping test. Quickly search the for IP camera's IP address on your network
Cable tracer	Find a connected cable from a bundle of cables using audio tones
PoE /PSE voltage test	Measures PoE switch voltage and displays pin configuration
Digital Multi-meter *(Optional)	AC/DC Voltage, AC/DC current, Resistance, Capacitance, Data hold, Relative measurement, Continuity testing. Testing speed: 3 times/seconds, Data range -6600~+6600.

Optical power meter *(Optional)	Calibrated Wavelength(nm): 850/1300/1310/1490/1550/1625nm Power range(dBm) : -70~+10dBm
Visual fault locator *(Optional)	Test fiber's bending and breakage (SM and MM fiber)
TDR cable test *(Optional)	Cable's open circuit (Breakpoint) and short circuit measurement(BNC cable, telephone cable)
POWER	
External power supply	DC 12V 2A
Battery	Built-in 7.4V Lithium polymer battery, 7000mAh
Rechargeable	After charging 6~7 hours, normal working time 16 hours
Parameter	
Operation setting	Capacitive touch screen, OSD menu, select your desired language: English, Chinese, Korean, Russian, Italian, Polish,French, Japanese etc
Auto off	1-30 (mins)
General	
Working Temperature	-10℃ ----+50℃
Working Humidity	30%-90%
Dimension/Weight	264mm x 182mm x 43mm / 1Kg

4.2 Multi-meter specifications

Counts:-6600~+6600

Conversion rate: 3times/s

Current modes for clamp meter with ZERO function

Isolation: the Multi-Meter connector must be isolated with the other connector.

DC voltage

Range	Accuracy	Resolution
660mV (Manual range)	$\pm (0.3\%+4)$	0.1mV
6.600V		1mV
66.00V		10mV
660.0V		100mV

AC voltage

Range	Accuracy	Resolution
660.0mV (Manual range)	$\pm (1.5\%+6)$	0.1mV
6.600V	$\pm (0.8\%+6)$	1mV
66.00V		10mV
660.0V		100mV

DC current

Range	Accuracy	Resolution
6.600mA	$\pm (0.5\%+3)$	1uA
66.00mA		10uA
660.0mA		100uA
10.00A	$\pm (1\%+5)$	10mA

AC current

Range	Accuracy	Resolution
6.600mA	$\pm (0.5\%+3)$	1uA
66.00mA		10uA
660.0mA		100uA

10.00A	$\pm (1\%+5)$	10mA
--------	---------------	------

Resistance

Range	Accuracy	Resolution
660.0 Ω	$\pm (0.8\%+5)$	0.1 Ω
6.600K Ω	$\pm (0.8\%+2)$	1 Ω
66.00K Ω		10 Ω
660.0K Ω		100 Ω
6.600M Ω		1K Ω
66M Ω	$\pm (1.2\%+5)$	10K Ω

») Continuity

Range	Resolution	Function
660.0 Ω	0.1 Ω	The measurement value less 30 Ω \pm 3 Ω ,the tester will sound

Diode

Range	Resolution	Function
2.0V	1mV	Schottky diode:0.15~0.25V rectifier diode:0.6~1.0V triode PN junction:0.5~0.8V

Capacitance

Range	Accuracy	Resolution
6.600nF	$\pm (0.5\%+20)$	1pF
66.00nF	$\pm (3.5\%+8)$	10pF
660.0nF		100pF

6.600μF	$\pm (5\%+8)$	1nF
66.00μF		10nF
660.0μF		100nF
6.600mF		1μF
66.00mF		10μF

4.3 Optical power meter specifications

Measure Range(dBm)	-70~+10dBm
Wavelength(nm)	850nm,1300nm,1310nm,1490nm,1550nm,1625nm
Detector	InGaAs
Uncertainly	< $\pm 3\%$ dB(-10dBm,22℃) < $\pm 5\%$ dB(full range,22℃)
Display Resolution	Linear:0.1% ; Nonlinear:0.01dBm
Operating Temperature(℃)	-10~+50
Storage Temperature (℃)	-20~+70
Connector type	FC/PC

4.4 Visual fault locator specifications

Laser type	LD
Wavelength Calibration	650nm
Output power	5mW (Optional 10mW, 20mW)
Modulation mode	CW/1Hz/2Hz

Measurement Range	5KM (Optional 10-20KM)
Connector	FC/PC exchangeable
Working Temperature	-10°C ~+50°C
Operating Temperature	-20°C ~+70°C

The data above is only for reference and any change of them will not be informed in advance. For more detailed technical inquiries, please feel free to call the Technical Department of our company.